



Poznańskie Centrum Superkomputerowo-Sieciowe
Poznan Supercomputing and Networking Center



What to do with AI ?

Its everywhere, and where are we ?

Raimundas Tuminauskas, [Marcin Wolski](#)
Brighton, June 2025

Everyone is using LLM

- Gartner predicts¹, that 30% of Fortune 500 companies will offer customer service through a single channel based on AI technologies
- R&E is using it. For text writing but also other tasks: data analysis, research assistance, code writing.
 - 81 % of ~816 peer-review authors have incorporated large language models into their research workflows²
 - 94% of researchers believe AI will help accelerate knowledge discovery³



¹ <https://www.gartner.com/en/newsroom/press-releases/2024-12-11-gartner-predicts-that-30-percent-of-fortune-500-companies-will-offer-service-through-only-a-single-ai-enabled-channel-by-2028>

² Liao, Zhehui, et al. "LLMs as Research Tools: A Large Scale Survey of Researchers' Usage and Perceptions." arXiv preprint arXiv:2411.05025 (2024).

³ Insights 2024: Attitudes toward AI, Elsevier

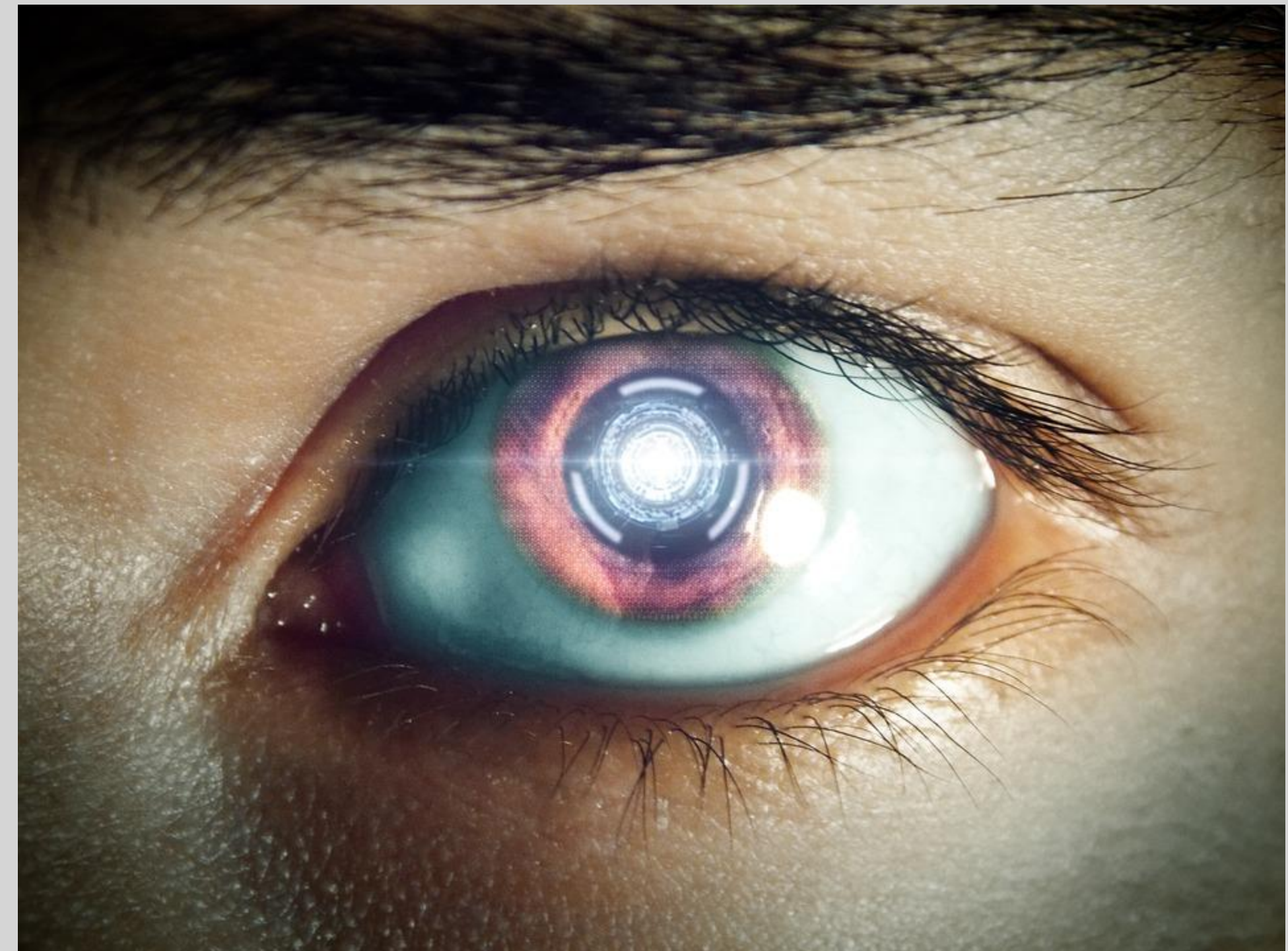
Everyone is developing models

- The AI/ML models are developed, adapted and used by many projects and R&E institutions.
- There's no hard data – almost no statistics. AI-Watch 2022 report analyses 686 use cases across public sector in Europe.
- Quality is anyone's guess especially in R&E, although some analyses exist, e.g. evaluating AI Act.
- Its assumed that AI/ML is an advantage by default. Currently, the quality is assumed rather than assured.



Most efficient LLM owners are outside of control

- Nobody knows what policies in the world will look like in a couple of years
- Trade wars, tariffs and prohibitions
- Who knows who and what upcoming AI training resources will be used ?
- Europe has AI factories but home-grown LLMs are inferior quality



What we have to do ?

- Gather experience from the community on deployment of AI – where it is effective and where it is not.
- Identify areas where AI should be deployed immediately with acceptable risk:
 - ✓ Programming
 - ✓ Network configuration
 - ✓ Network monitoring
 - ✓ Risk assessment, trending and analysis
 - ✓ Documentation
- Retrain the workforce to use AI
- Ensure the sufficient access to necessary tools

Learn from the community!



How we can do it ?

- Collect hard data
 - ✓ Development of AI/ML models in R&E (and public sector?)
 - ✓ Use of LLMs in R&E
- Leverage GN SIG-AI
 - ✓ to coordinate data collecting and facilitate data sharing
 - ✓ to develop concepts for pilot project on the ethical and trusted AI/LLM¹
- Appetite for joint procurement of LLMs?

Collect evidences!
Coordinate activities!



¹ GÉANT Position Statement on the AI Continent Action Plan, May 2025

Summary

- We **must act** to avoid falling behind:
 - ❑ **Understand** where AI adds value — and where it doesn't.
 - ❑ **Deploy** AI now in low-risk, high-impact areas like programming, monitoring, and documentation.
 - ❑ **Retrain** our people to work with AI, not around it.
 - ❑ **Ensure** access to the right tools — across institutions.
 - ❑ **Collect** hard data on how AI and LLMs are used in our sector.
 - ❑ **Leverage** SIG-AI to coordinate efforts and shape ethical, trusted pilot projects.
 - ❑ **Explore** joint procurement of LLMs to regain strategic leverage.





Thank you for your attention

Marcin Wolski