

The Higher Education Interoperability Framework

EDEH
InterOp
assignment

18 months

Community-
driven &
Co-created

250+ experts

A wide range
of outcomes
& outputs

Vision 	Manifesto	All stakeholders	The Manifesto is at the heart of the development of a European Higher Education Interoperability Framework. It guides the higher education interoperability working group in the European Digital Education Hub.
Governance 	Proposal for a Multi-Stakeholder Coordination Group on European Higher Education Interoperability	Policy and decision-makers, umbrella organisations	Proposes a transparent, inclusive and sustainable way to coordinate work on the European Higher Education Interoperability Framework.
Implementation 	Implementation resources	HEI and EU-As leadership, task leaders, ICT staff	The resources offer a modular and flexible kit with elements that can be adapted and shaped at the level of HEIs and EU-As to fit their individual realities and needs.
Analysis, inventory, recommendations    	<p>European Higher Education Interoperability Framework</p> <ul style="list-style-type: none"> An analysis of the state of interoperability across Higher Education systems in Europe (Synthesis report) An inventory of standards, processes, and ICT systems accross Higher Education (Mapping report) Glossary 	<p>HEI and alliances leadership, ICT staff</p> <p>Decision makers, HEI and EU-As leadership</p> <p>HEI and EU-As leadership, ICT staff</p> <p>All framework users</p>	<p>Combines key elements from different reports. Includes descriptions of the reference architecture, high-level business flow diagrams, and helpful recommendations to find concrete solutions to address identified gaps.</p> <p>Analyses data from over 40 EU-As, generating insights for future decision- and policy making.</p> <p>An inventory of standards and solutions currently in use at EU-As.</p> <p>Glossary of terms and concepts.</p>
Reference architecture 	Blueprint reference architecture and ArchiMate models	ICT staff	Describes the technical aspects of the reference architecture as built in the open architecture modelling language ArchiMate. Presents three complementary views for each of the eight priority use cases identified: organisational, semantic, and technical.

One learner
One alliance

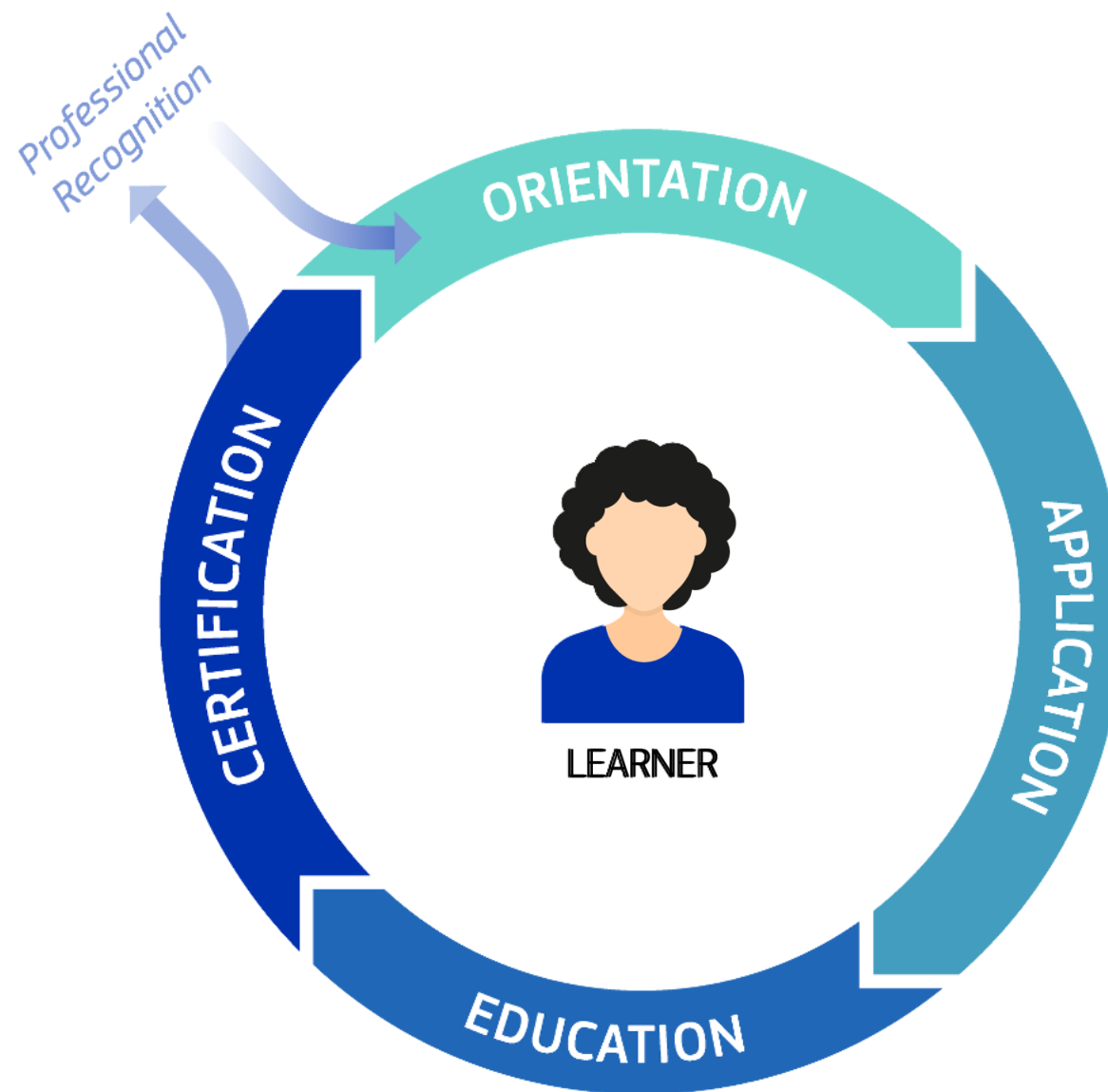
=

Nine institutions

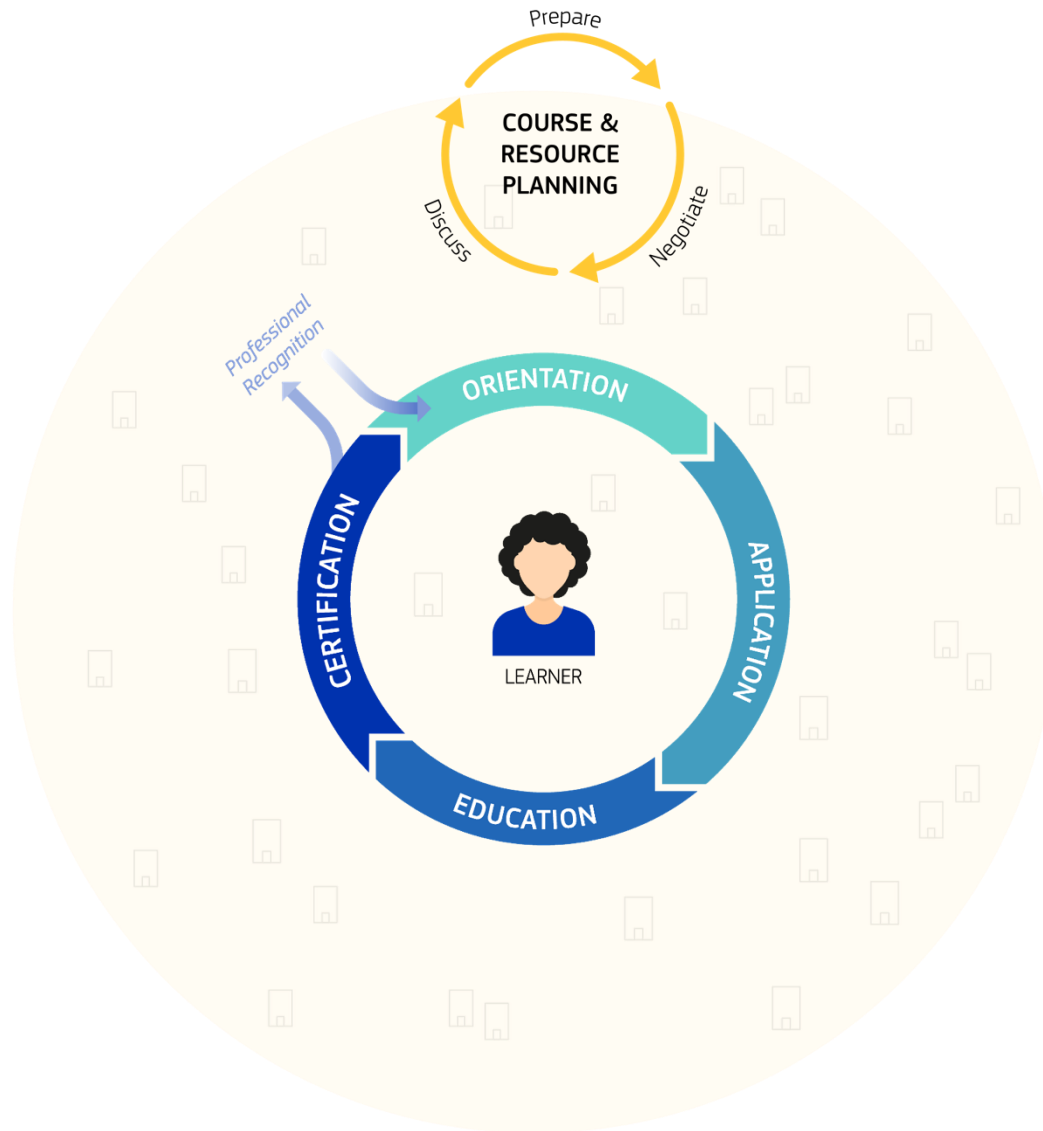
Meet Sam →



Sam's learner's Journey



The diagram



USE CASE 1

Discover



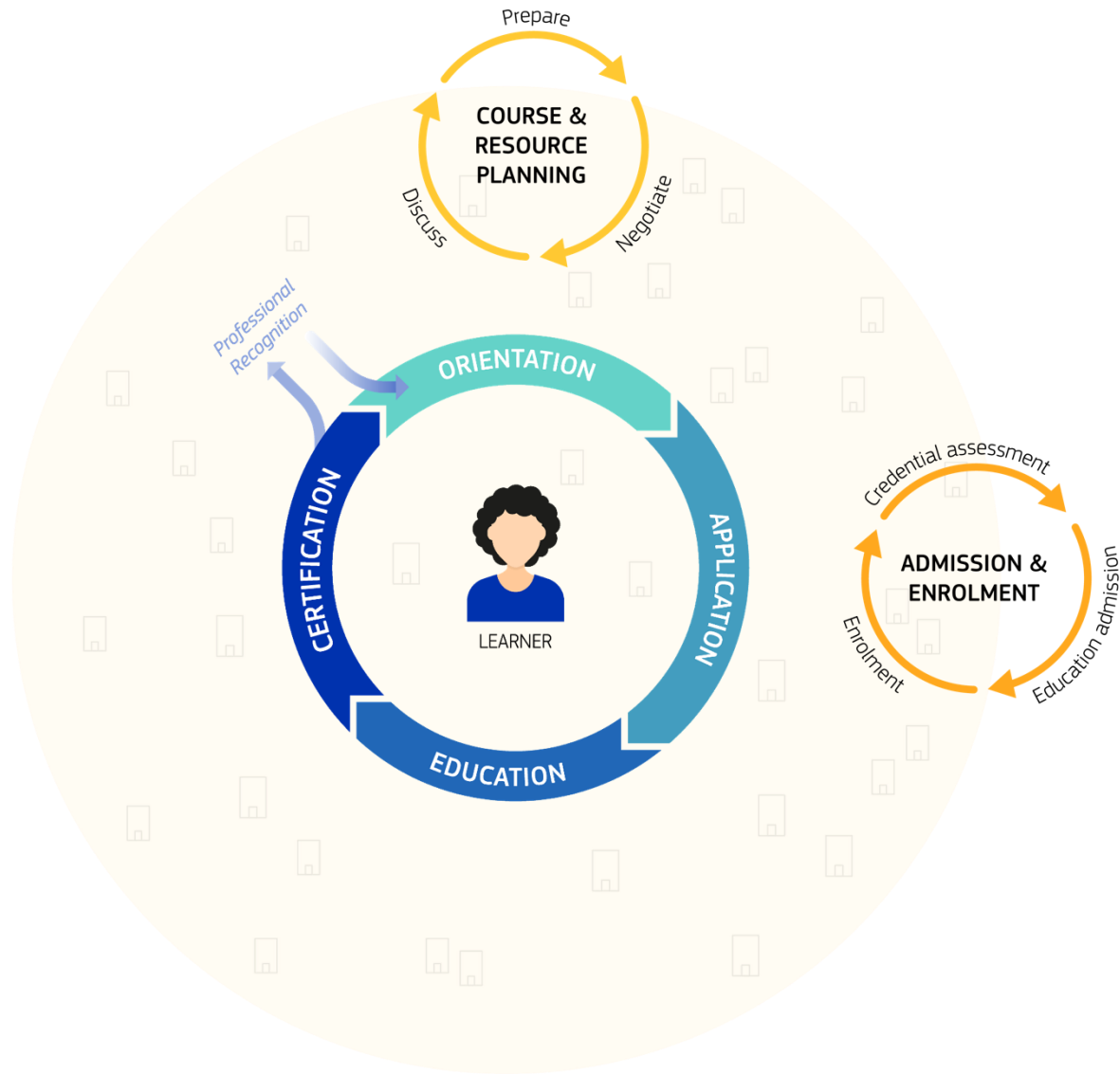
Enhancing the visibility and comparability of diverse learning and mobility opportunities across HEIs, emphasising the importance of machine-readable metadata for easy comparison and discovery.

CMS (website) | Course catalogue
Curriculum management

ORIENTATION



The diagram



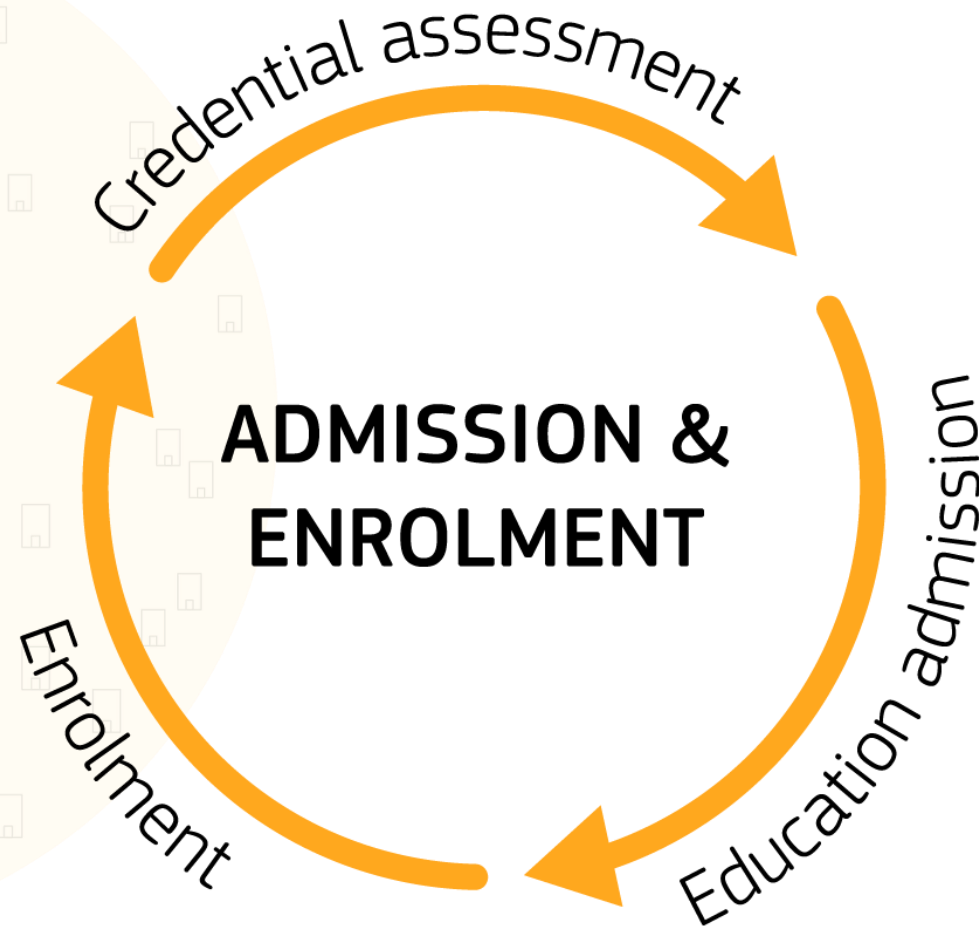
USE CASE 2

Apply & get recognition



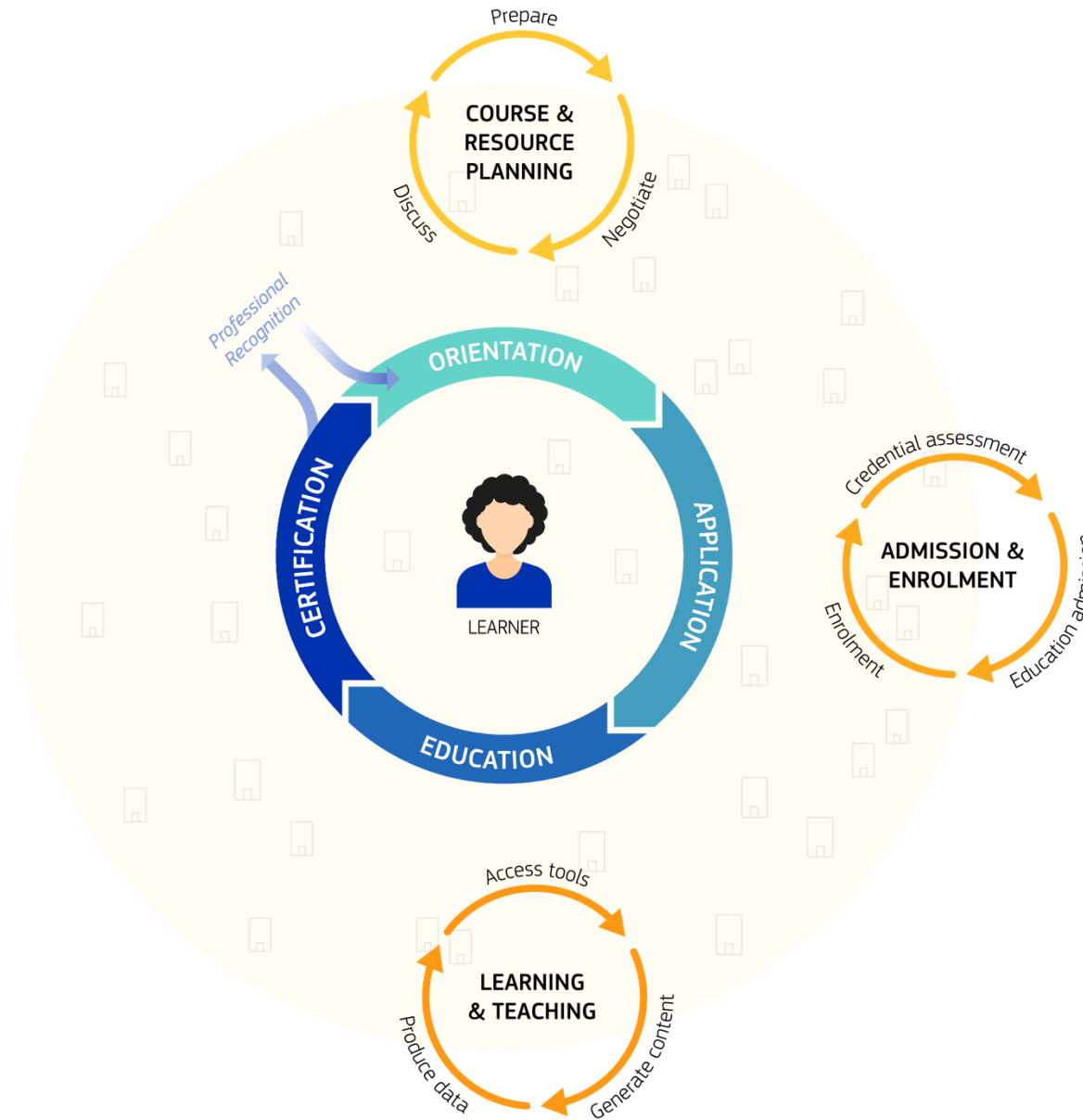
Simplifying credit recognition and cross-institutional enrolment, emphasising seamless data exchange to support all forms of learner mobility and academic continuity.

Admissions Recognition



APPLICATION

The diagram



EDUCATION

USE CASE 5

Generate data



Establishing a standardised approach for the exchange of learners' activity data to ensure a seamless integration of various virtual learning environments.

Learning Analytics
Student Analytics

Access tools

USE CASE 3

Access tools



Streamlining the procurement, management, and governance of shared resources among alliance members, covering both physical and virtual assets.

Laboratory access
Library systems
Research tool registry

LEARNING & TEACHING

Produce data

Generate content

USE CASE 4

Manage educational resources



Promoting the accessibility and mobility of educational materials, fostering a collaborative and accessible educational environment.

Content generation
Sharing
Use and re-use

EDUCATION

Access tools

LEARNING
& TEACHING

USE CASE 3

Access tools



Streamlining the procurement, management, and governance of shared resources among alliance members, covering both physical and virtual assets.

- Laboratory access
- Library systems
- Research tool registry

LEARNING & TEACHING

Generate content

USE CASE 4

Manage educational resources



Promoting the accessibility and mobility of educational materials, fostering a collaborative and accessible educational environment.

Content generation

Sharing

Use and re-use

USE CASE 5

Generate data



Establishing a standardised approach for the exchange of learners' activity data to ensure a seamless integration of various virtual learning environments.

Learning Analytics

Student Analytics

LEARNING & TEACHING

Produce data

The diagram



USE CASE 6

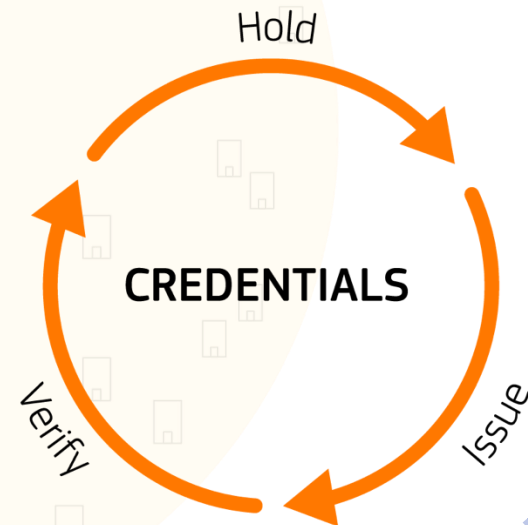
Earn credential



The digital management of educational credentials (issuance, verification, revocation), affirming the achievements from diverse learning experiences.

Micro-credentials

Portable credentials



CERTIFICATION

The diagram



USE CASE 1

Discover



Enhancing the visibility and comparability of diverse learning and mobility opportunities across HEIs, emphasising the importance of machine-readable metadata for easy comparison and discovery.

CMS (Website) | Course catalogue
Curriculum management

USE CASE 2

Apply and get recognition



Simplifying credit recognition and cross-institutional enrolment, emphasising seamless data exchange to support all forms of learner mobility and academic continuity.

Admissions | Recognition

USE CASE 3

Access tools



Streamlining the management and governance of shared resources among alliance members, covering both physical and virtual assets.

Laboratory access | Library systems
Research tool registry

USE CASE 4

Manage educational resources



Promoting the accessibility and mobility of educational materials, fostering a collaborative and accessible educational environment.

Content generation | Sharing
Use and re-use

USE CASE 5

Generate data



Establishing a standardised approach for the exchange of learners' activity data to ensure a seamless integration of various virtual learning environments.

Learning Analytics
Student Analytics

USE CASE 6

Earn a credential



The digital management of educational credentials (issuance, verification, revocation), affirming the achievements from diverse learning experiences.

Micro-credentials
Portable credentials

USE CASE 7

User identity

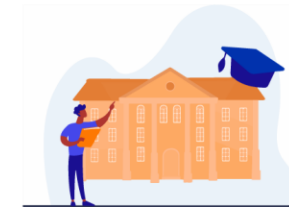


Achieving interoperability for user identities across educational transitions, ensuring consistent identification throughout their academic journey.

Access | Federated identity
Student cards

USE CASE 8

Institutional identity



Developing a cohesive framework for trusted institutional identities, facilitating smoother collaborations and exchanges between HEIs.

Accreditation | Ranking

Vision	Manifesto	All stakeholders	The Manifesto is at the heart of the development of a European Higher Education Interoperability Framework. It guides the higher education interoperability working group in the European Digital Education Hub.
Governance 	Proposal for a Multi-Stakeholder Coordination Group on European Higher Education Interoperability	Policy and decision-makers, umbrella organisations	Proposes a transparent, inclusive and sustainable way to coordinate work on the European Higher Education Interoperability Framework.
Implementation 	Implementation resources	HEI and EU-As leadership, task leaders, ICT staff	The resources offer a modular and flexible kit with elements that can be adapted and shaped at the level of HEIs and EU-As to fit their individual realities and needs.
Analysis, inventory, recommendations    	<p>European Higher Education Interoperability Framework</p> <ul style="list-style-type: none"> An analysis of the state of interoperability across Higher Education systems in Europe (Synthesis report) An inventory of standards, processes, and ICT systems accross Higher Education (Mapping report) Glossary 	<p>HEI and alliances leadership, ICT staff</p> <p>Decision makers, HEI and EU-As leadership</p> <p>HEI and EU-As leadership, ICT staff</p> <p>All framework users</p>	<p>Combines key elements from different reports. Includes descriptions of the reference architecture, high-level business flow diagrams, and helpful recommendations to find concrete solutions to address identified gaps.</p> <p>Analyses data from over 40 EU-As, generating insights for future decision- and policy making.</p> <p>An inventory of standards and solutions currently in use at EU-As.</p> <p>Glossary of terms and concepts.</p>
Reference architecture 	Blueprint reference architecture and ArchiMate models	ICT staff	Describes the technical aspects of the reference architecture as built in the open architecture modelling language ArchiMate. Presents three complementary views for each of the eight priority use cases identified: organisational, semantic, and technical.

European Digital Education Hub

Phase 2

- ✓ Hand-over of the InterOperability work to an independent governing structure
- ✓ Continued squads → Help with facilitation of governance
- ✓ Early Adopter programme
- ✓ Potential additional material based on success stories