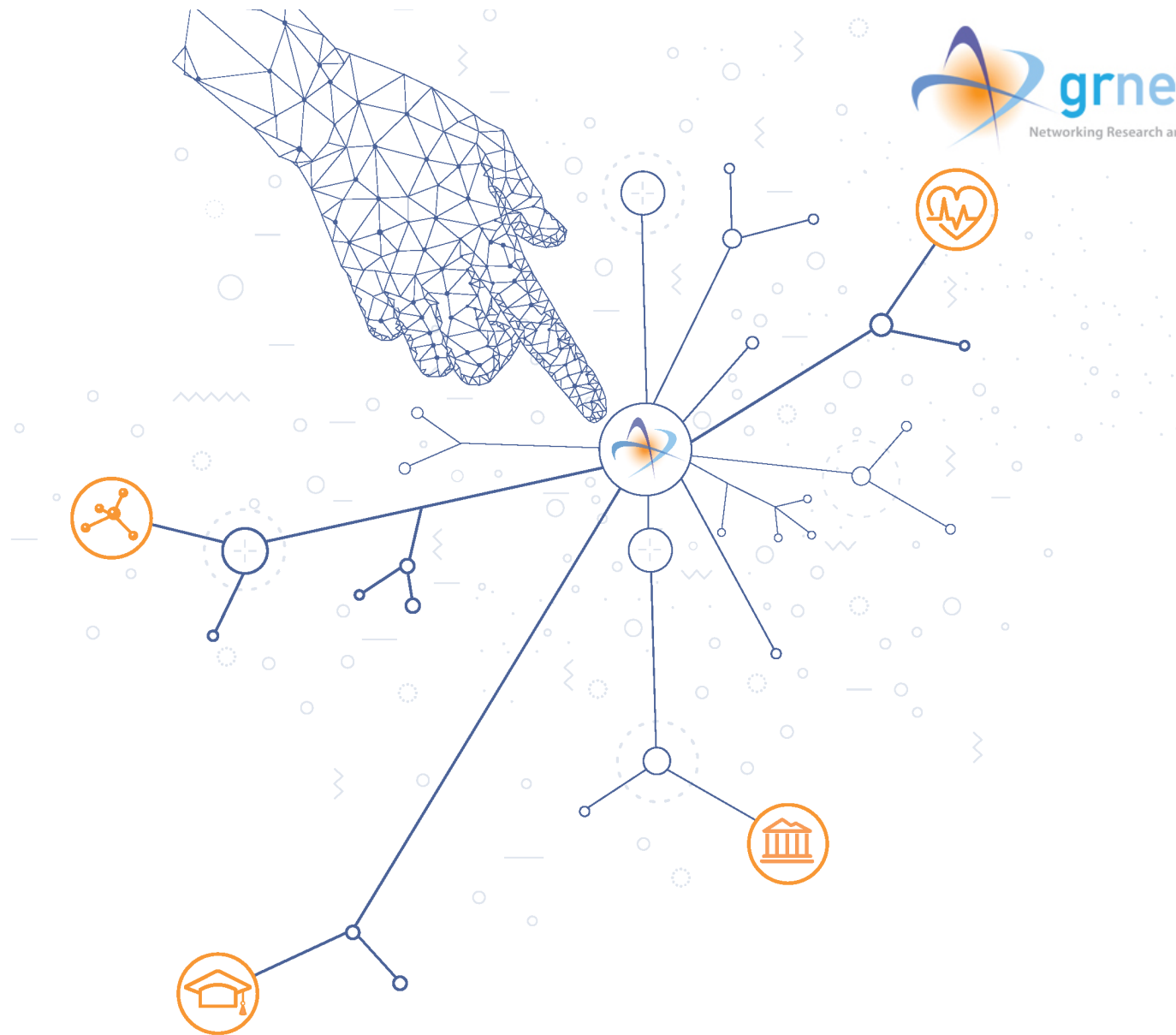




Orchestrating service delivery @GRNET

Afrodite Sevasti, CTO, GRNET



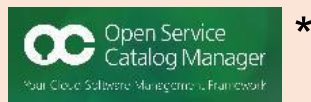


A platform for orchestration

Terms of play

Orchestrated/automated Service Delivery

Business systems



Integration & orchestration

Operations systems





Orchestration



Service recipes for
BPMN execution
engine in ONAP*
Service Orchestration



- **Business Process Engine** using **BPMN** to model processes
- **Orchestrates** the end-to-end workflow and the interactions between systems that take part in a service offering scenario (e.g. L2VPN).
- Provides the ability to include **user tasks** as part of the workflow.
- Provides a single point to **monitor the state** of a process instance



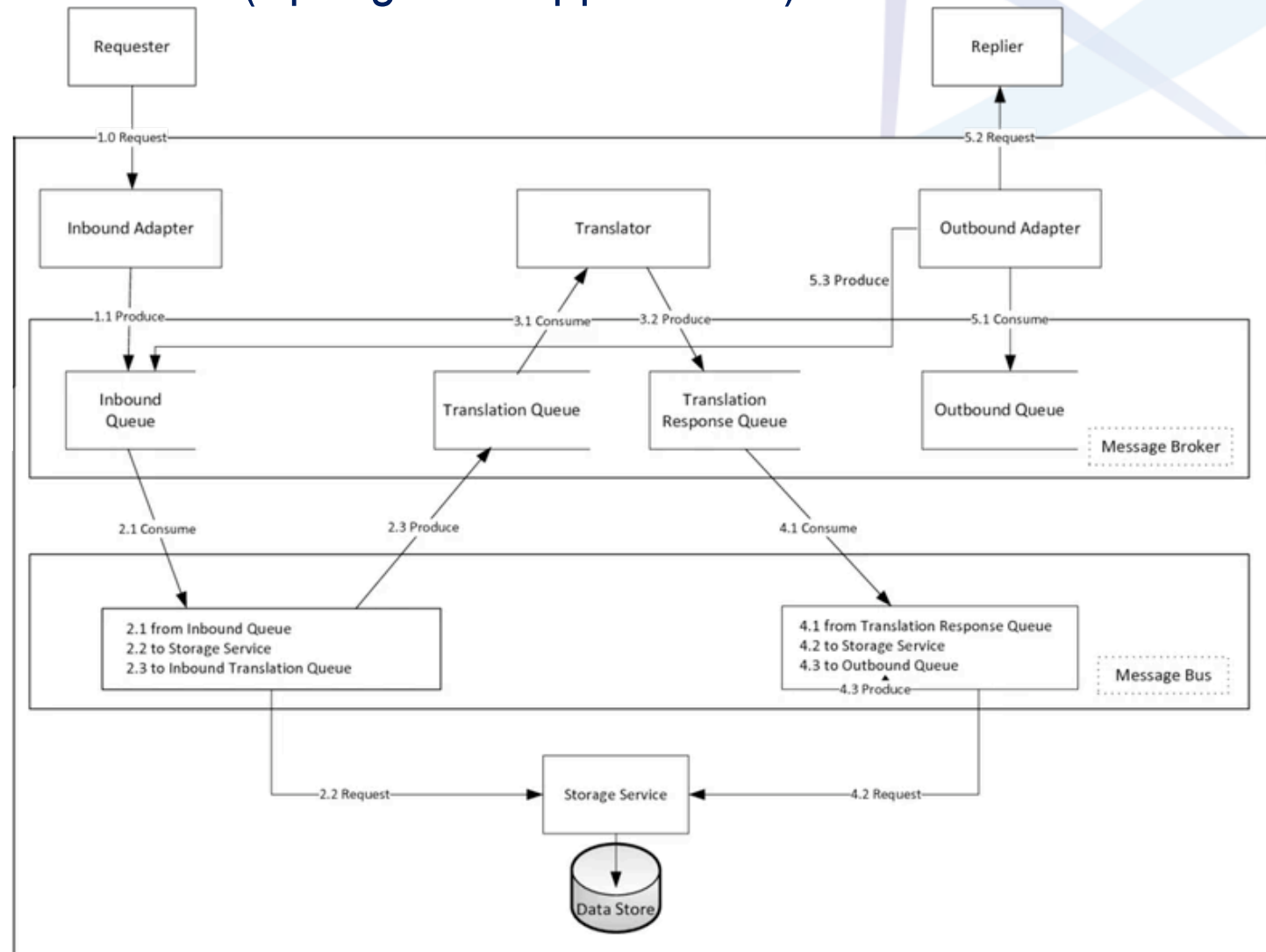
Integration

- A **microservices architecture** (Spring Boot applications)

- Building blocks:

- **Adapter** microservices
- **Translator** microservices
- **Message Broker**
- **Message Bus**
- **Storage** microservice

- **Microservices can be containerized**, deployed in a cluster, replicated etc.



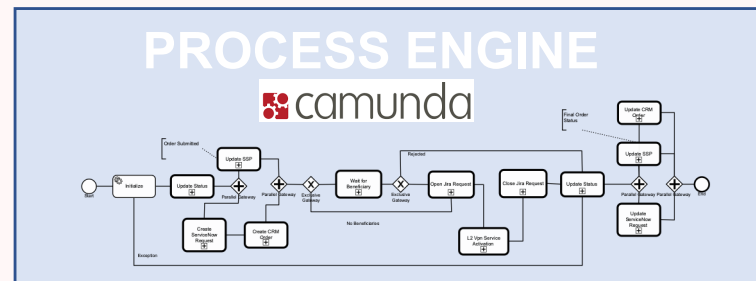
Integration framework components' outline



- **Adapter microservices** defined per external system
 - Conversion of system interfaces to the common integration interface of the Message Bus
- **Translator microservices** defined per external system
 - Data model translation between the native data model of the external system and the common data model of the Message Bus (TMForum SID)
- **Message Broker** is implemented using Apache ActiveMQ
 - Guaranteed and exactly-once delivery semantics, durable and persistent
- **Message Bus** routes messages based on their headers (Requester, Action, Resource etc.) using the Apache Camel framework
 - It **ensures persistence** by synchronously contacting the Storage Service
 - **Everything is configuration based** and no system interaction is hardcoded
- **Storage microservice**
 - Persistence layer with generic API for storing/retrieving interaction details



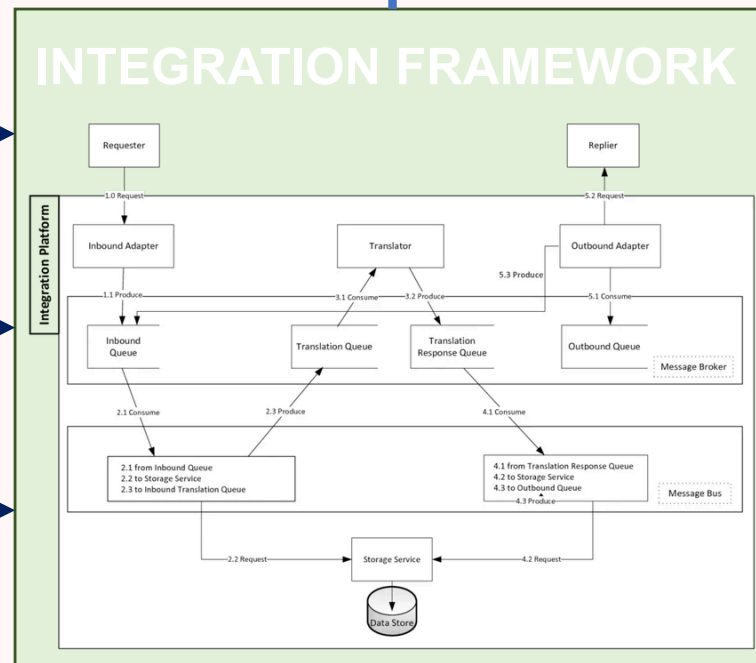
The big picture



Shared data model

Business systems

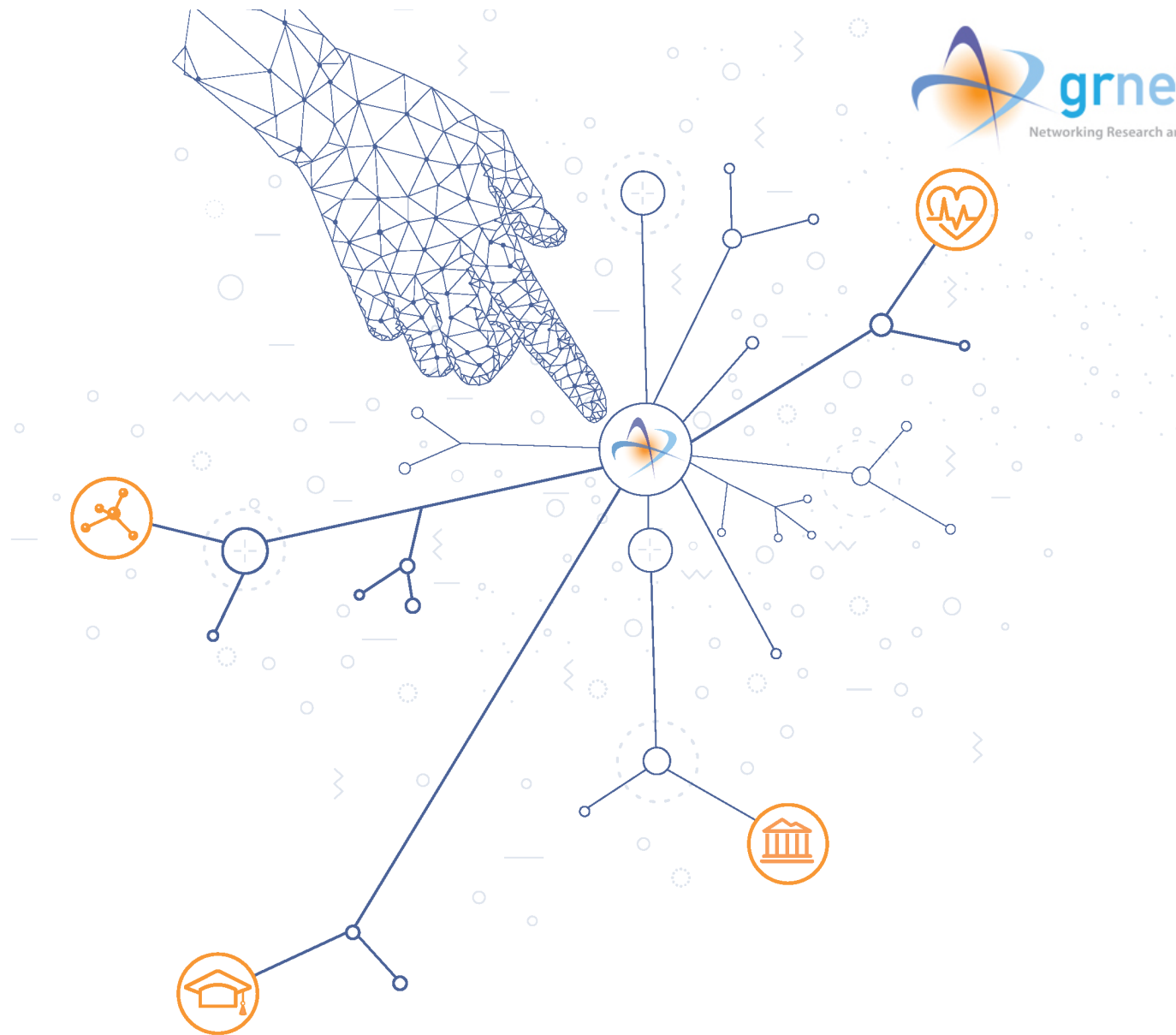
- Jira
- SUITE CRM
- KEYCLOAK
- servicenow
- Open Service Catalog Manager



Operations systems

- Jira
- CMDB
- puppet
- ANSIBLE
- OBSERVIVUM network management and monitoring
- StackStorm

Standard's based, service-agnostic APIs



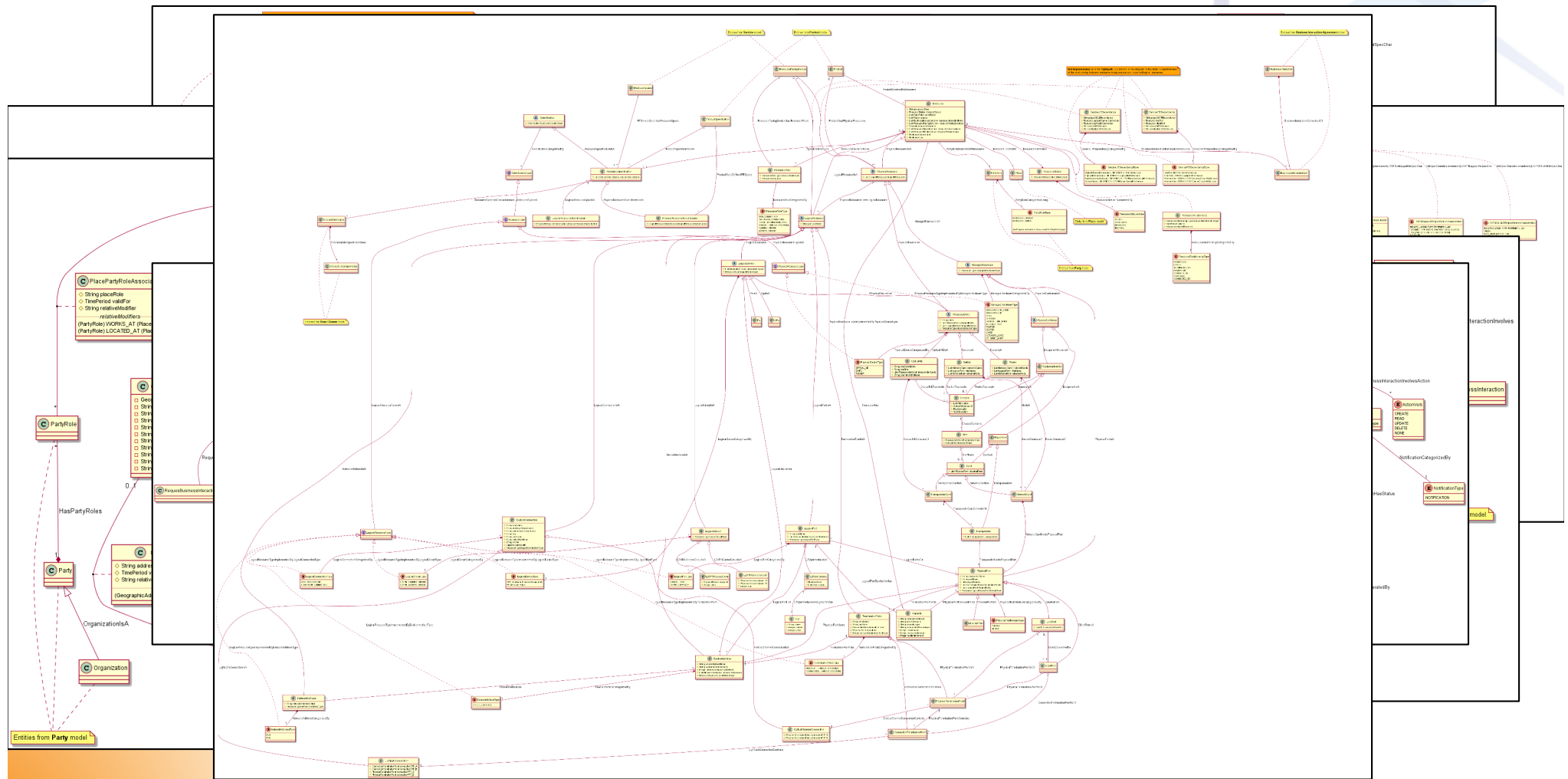
Data modelling across the platform

Which data model: Business layer



Product // Service // Party // Place //
Business Interaction-Agreement // Resource

tmforum
Information Framework (SID)



Which data model: Operations layer

■ Physical Resources

- PhysicalDevice (SID extended)
- PhysicalDeviceType (SID extended)
- Router & Switch
 - both extend SID PhysicalDevice
- Chassis (SID extended)
- Slot (SID extended)
- Card (extends SID Equipment)
- NetworkCard (extends SID Card)
- EthernetPort (extends SID PhysicalPort)
- ManagedHardwareType (SID extended)
- PhysicalPortMediumType

■ Logical Resources

- LogicalDeviceType
- LogicalCircuitType
- CPE & PE
 - both extend SID LogicalDevice
- PE (extends SID LogicalDevice)
- ResourceRoleType (SID extended)
- LogicalCircuit (extends SID LogicalResource)
- L2VPNCarrierCircuit & L2VPNAccessCircuit
 - both extend SID LogicalCircuit
- L2VpnInterface (extends SID LogicalPort)
- LogicalPortType

Which data model: Best of both worlds



tmforum
Information Framework (SID)

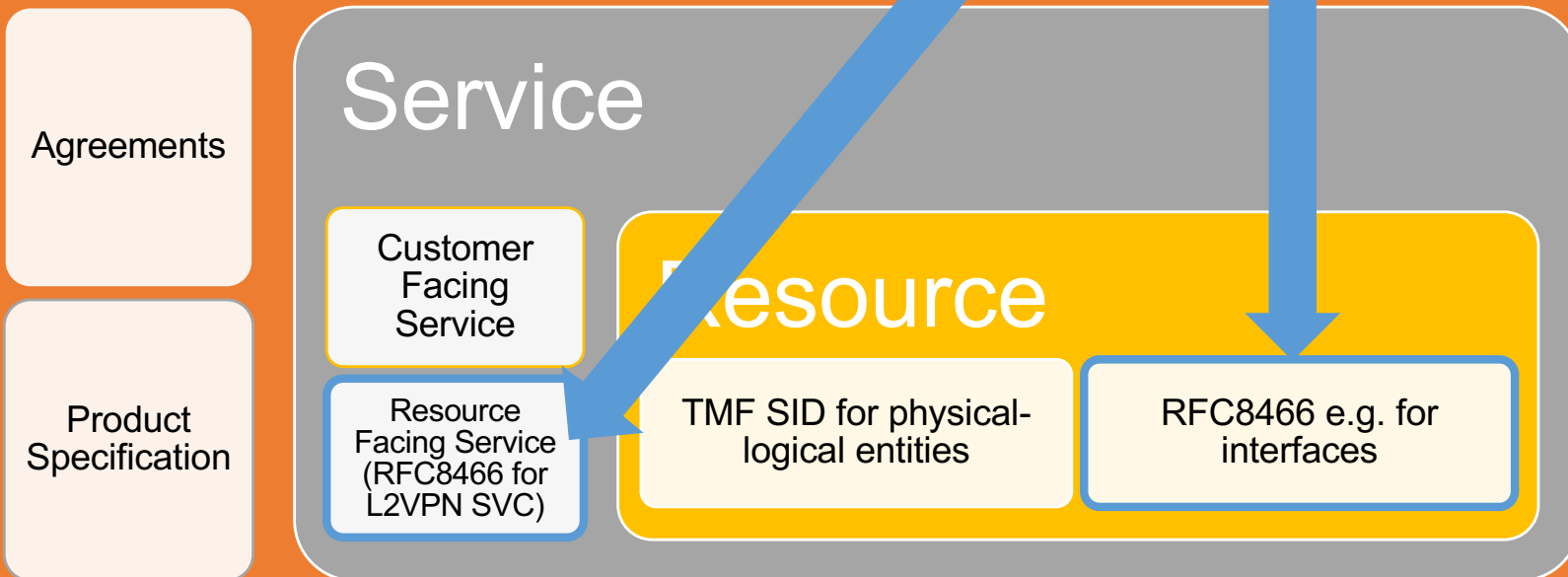
Internet Engineering Task Force (IETF)
Request for Comments: 8466
Category: Standards Track
ISSN: 2070-1721

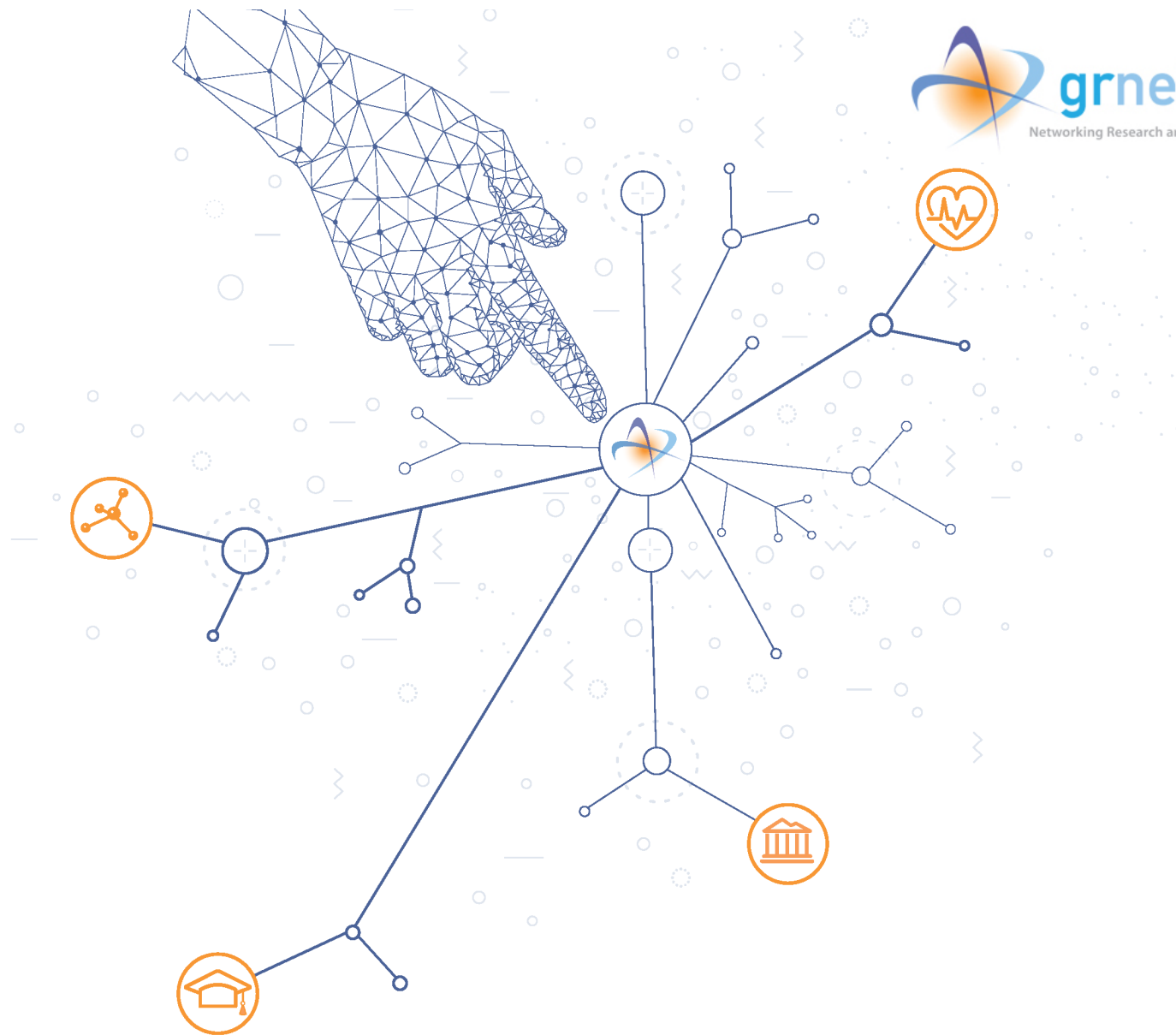
B. Wen
Comcast
G. Fioccola, Ed.
Telecom Italia
C. Xie
China Telecom
L. Jalil
Verizon
October 2018

RFC 8466

A YANG Data Model for
Layer 2 Virtual Private Network (L2VPN) Service Delivery

Business Interactions - Product





APIs and authZ/authN

Which APIs



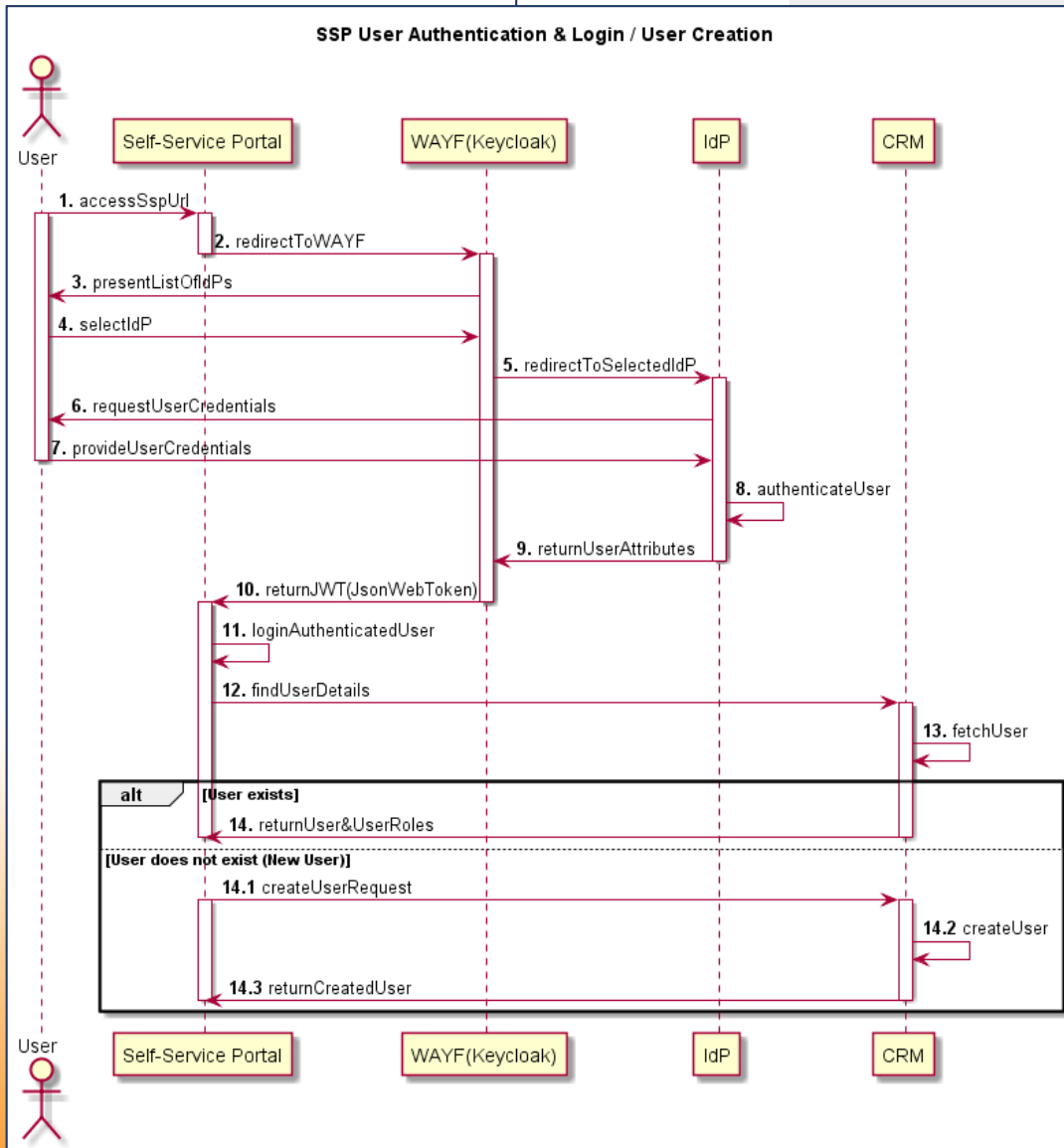
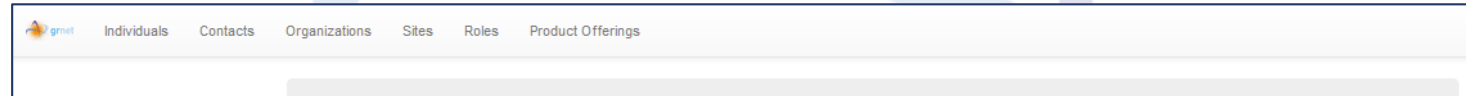
APIs	Description
Party management	Information usually found in an organization's CRM ✓
Agreement management	Managing information about business agreements in a structured format
Service catalogue	Managing information about customer and resource facing service offerings (to be shared with partners), usually found in an ITSM system ✓
Product catalogue	Information about product offerings-to be shared with customers/users, usually found in an ITSM system
Order management	Managing information about orders, usually found in an ITSM system ✓
Configuration & Activation	Used to retrieve, create, update, delete Services (also via asynchronous requests) or Resources. ✓
Resource inventory management	Consistent/standardized mechanism to query and manipulate the Resource inventory.



Portals, catalogues etc.



IdP and CRM authZ/authN



Different contexts – same user

Afrodite Sevasti

Identifiers +

- SHIBBOLETH: 7524c779-cde2-42bc-aa63-07ddc2661c03
- CRM: 5d0240e9b834740008b59b0e

Organization

Εθνικό Δίκτυο Έρευνας και Τεχνολογίας

Contacts +

Contact 5d0240e9b834740008b59b0f

sevastidummy@gr

Roles +

L2VPN

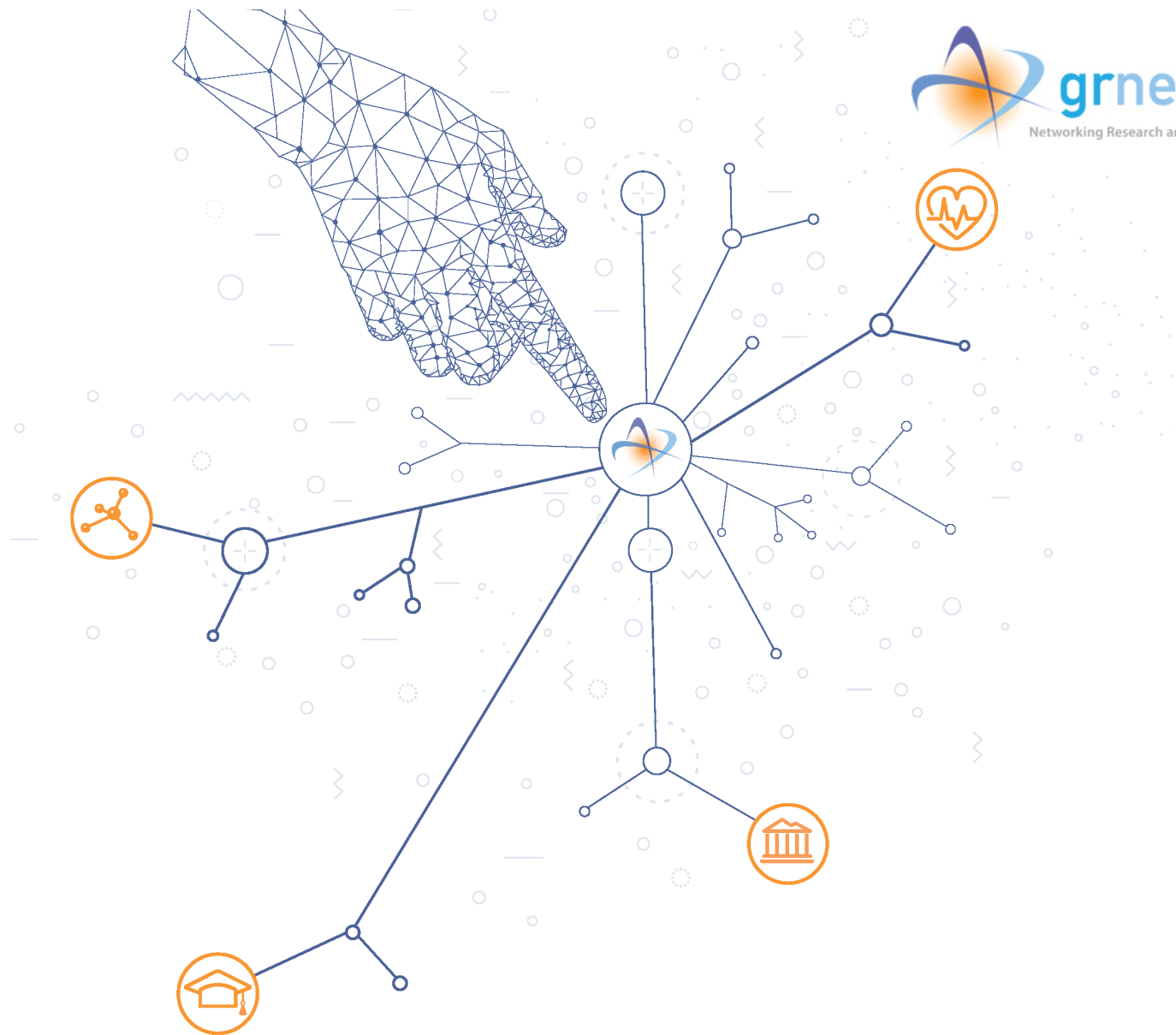
Service User

Lightpath

Service User

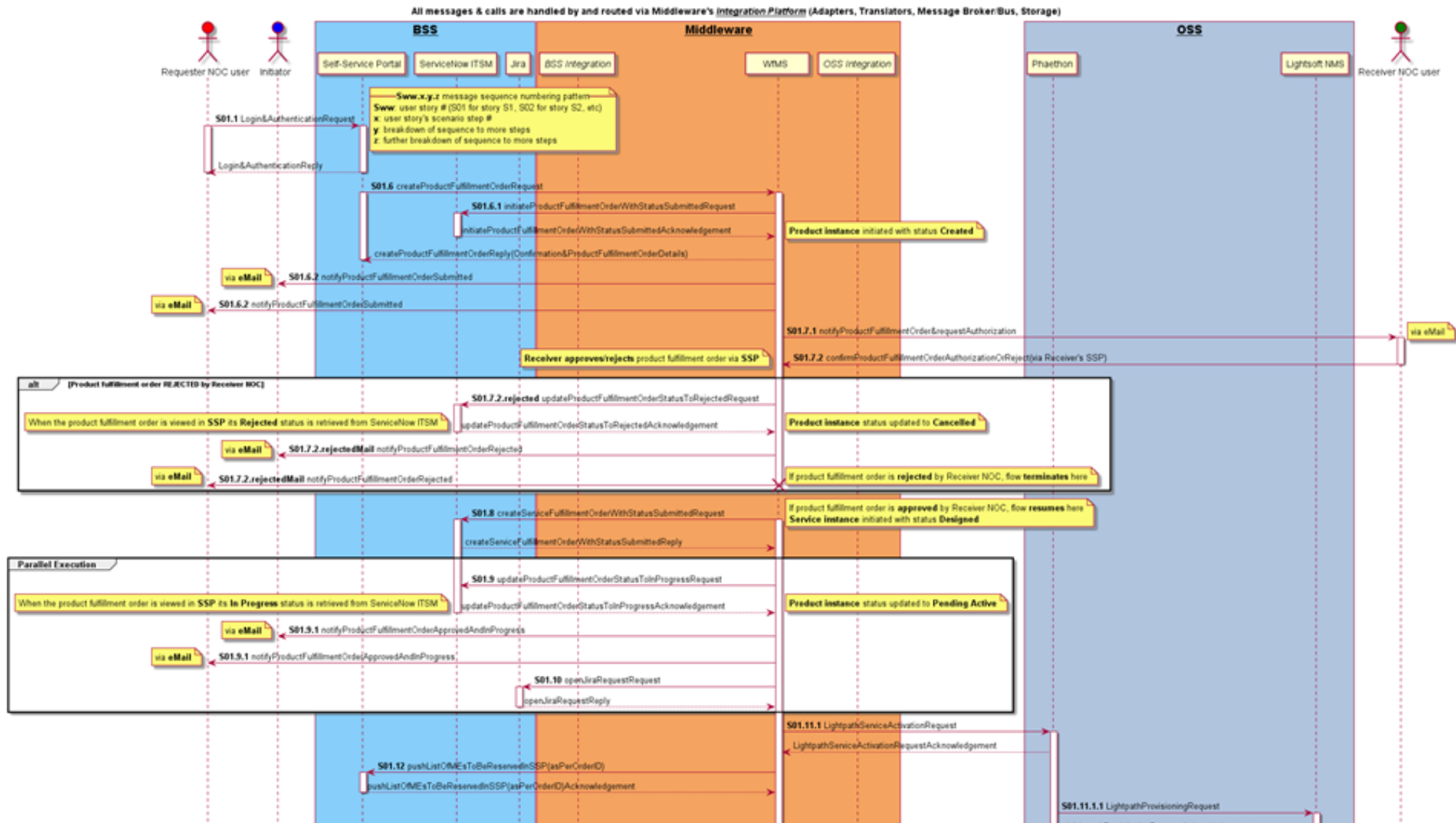
Institution NOC user

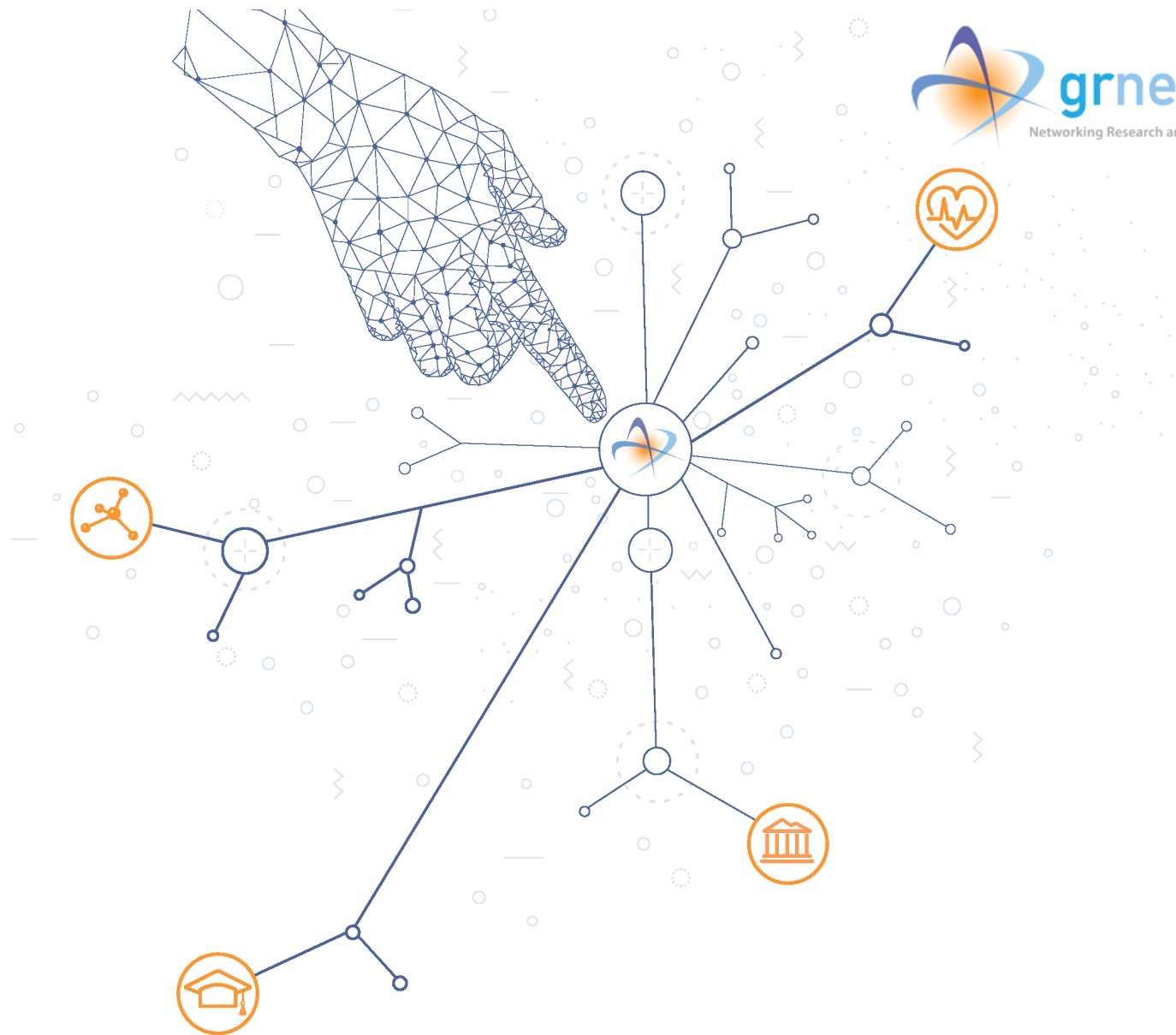
Roles per service



Orchestrated delivery sneak peek

Orchestrated delivery: what does it look like



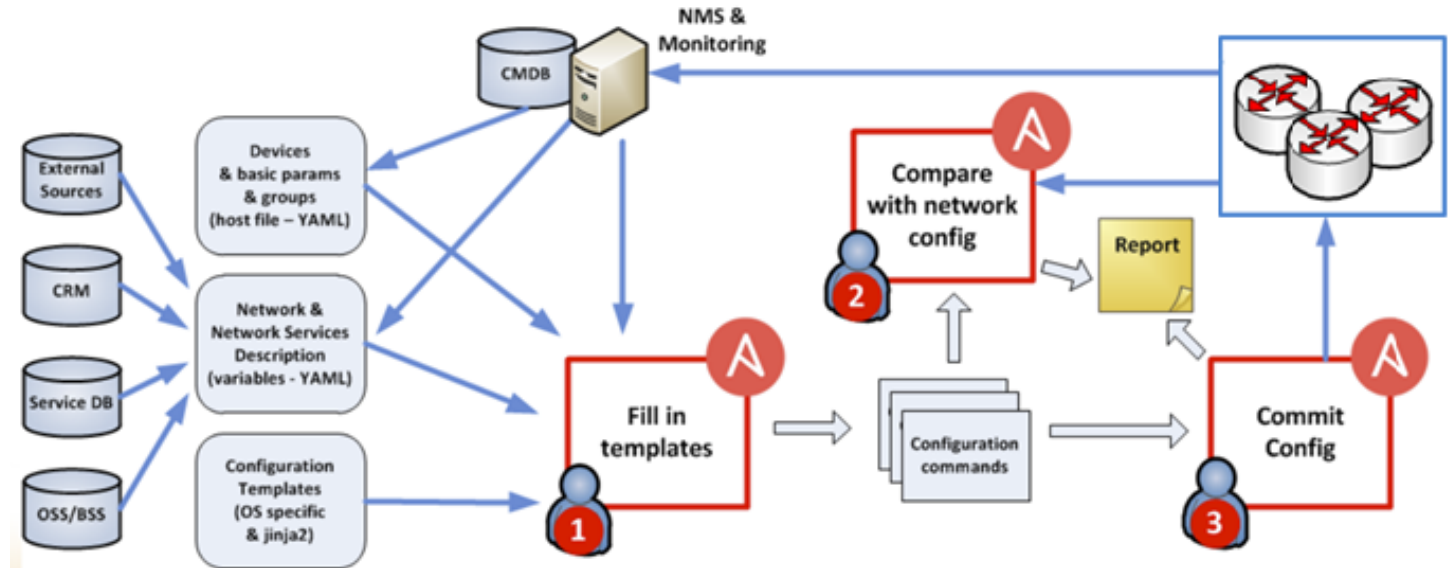


OSS and below

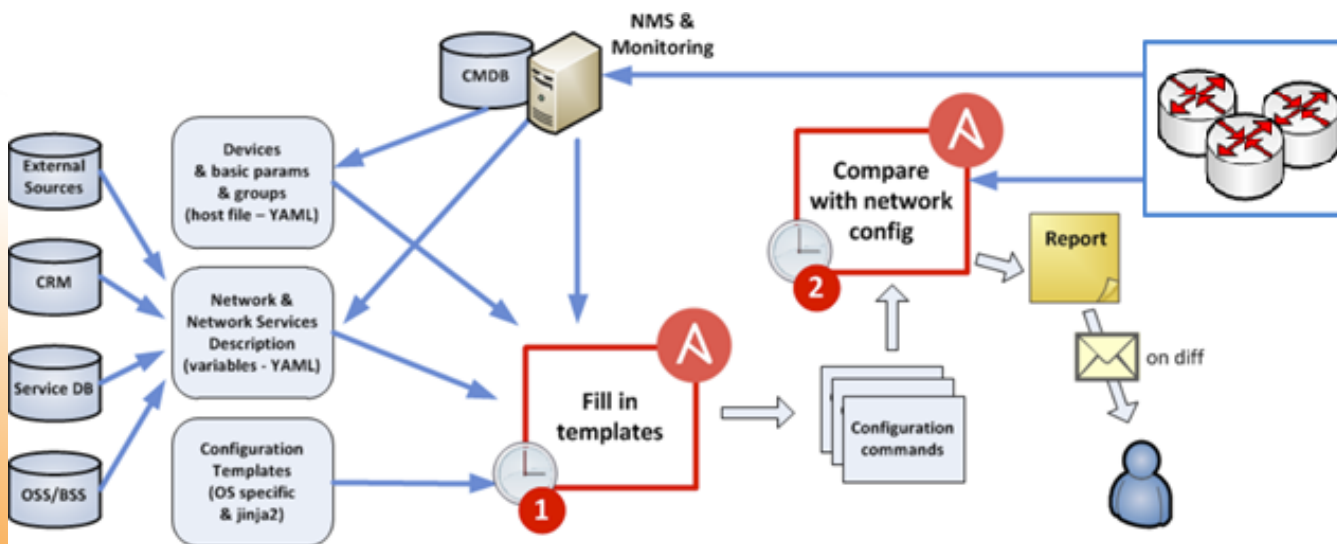
Automation



Configuration



Reconciliation

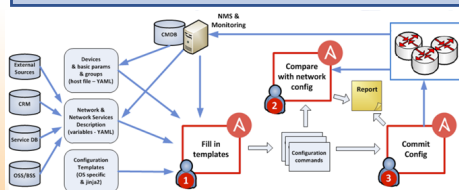


L2 VPN OSS

Rest of
OSS/BSS stack



L2 VPN OSS



Ansible-powered
automation

- Consume and implement **Activation and Configuration API** requests arriving from the orchestrator (process engine).
- **Configuration templating** and automation in the NREN infrastructure for L2VPN service delivery
 - GRNET delivers L2VPN services using MPLS technologies over its carrier network.
 - Using **Ansible** playbooks combined with **Jinja2** templates
- A **playbook identifies the edge devices** across the GRNET backbone where configuration is required.
- The playbook that **builds the configuration runs and generates the VPN configuration** only, based on predefined templates.
- **Roles** ensure that the **orchestrator-invoked operations** can only trigger specific/a selected **subset of automation tasks**.

Lightpath OSS SBI & NMS NBI



Rest of
OSS/BSS
stack



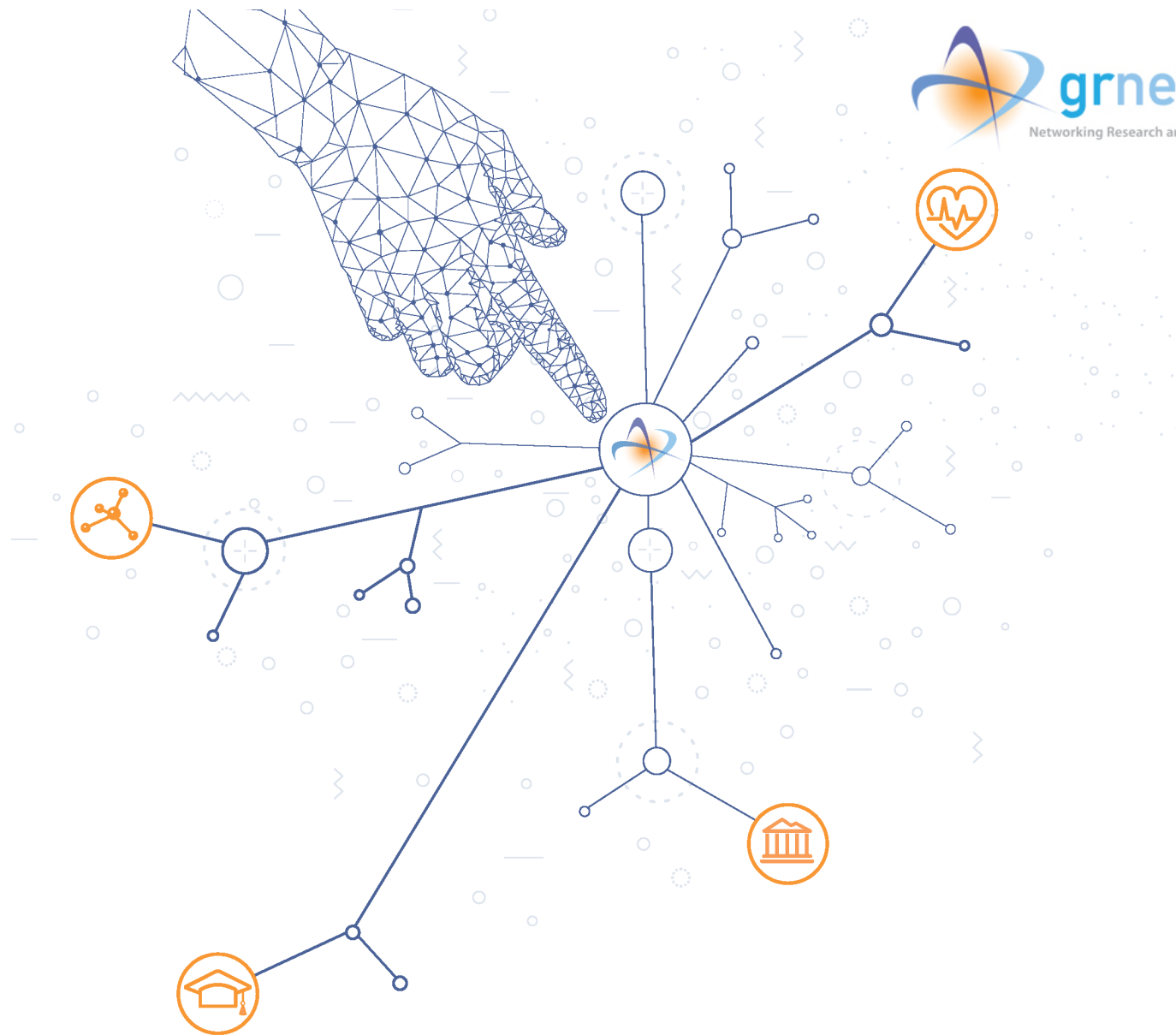
Activation and
Configuration API

Phaethon
(Lightpath
OSS)



ECI THE ELASTIC NETWORK
LightSOFT®

Phaethon Service Class	Phaethon Service Endpoint	LightSoft NBI Utilization (Corba, TMF814)
ConnectionControlHttp	/connectionControl /checkValidSubnetworkConnection	Ph_MultiLayerSubnetworkMgr.checkValidSNC()
	/connectionControl /createAndActivateSubnetworkConnection	Ph_MultiLayerSubnetworkMgr.createAndActivateSNC()
	/connectionControl /deactivateAndDeleteSubnetworkConnection	Ph_MultiLayerSubnetworkMgr.deactivateAndDeleteSNC()
	/connectionControl /createAndActivateSubnetworkConnectionAtOnce	Ph_MultiLayerSubnetworkMgr.createAndActivateSNCAtOnce()
	/connectionControl /deactivateAndDeleteSubnetworkConnectionAtOnce	Ph_MultiLayerSubnetworkMgr.deactivateAndDeleteSNCAtOnce()
	ConnectionRetrievalHttp	/connectionRetrieval/getAllSubnetworkConnections
/connectionRetrieval /getAllSubnetworkConnectionsWithTp		MultiLayerSubnetworkMgr_I.getAllSubnetworkConnectionsWithTP
/connectionRetrieval/getRoute		Ph_MultiLayerSubnetworkMgr.getRoute()
EquipmentInventoryRetrievalHttp	/connectionRetrieval/getSubnetworkConnection	MultiLayerSubnetworkMgr_I.getSNC()
	/equipmentInventory/getAllEquipment	EquipmentInventoryMgr_I.getAllEquipment()
	/equipmentInventory/getAllSupportingEquipment	EquipmentInventoryMgr_I.getAllSupportingEquipment()
ManagedElementRetrievalHttp	/equipmentInventory/getEquipment	EquipmentInventoryMgr_I.getEquipment()
	/managedElement/getAllManagedElements	ManagedElementMgr_I.getAllManagedElements()
	/managedElement/getManagedElement	ManagedElementMgr_I.getManagedElement()



A service example

Software-provisioned lightpaths



grnet Networking Research and Education

Orders Products NOC sevasti@admin.grnet.gr

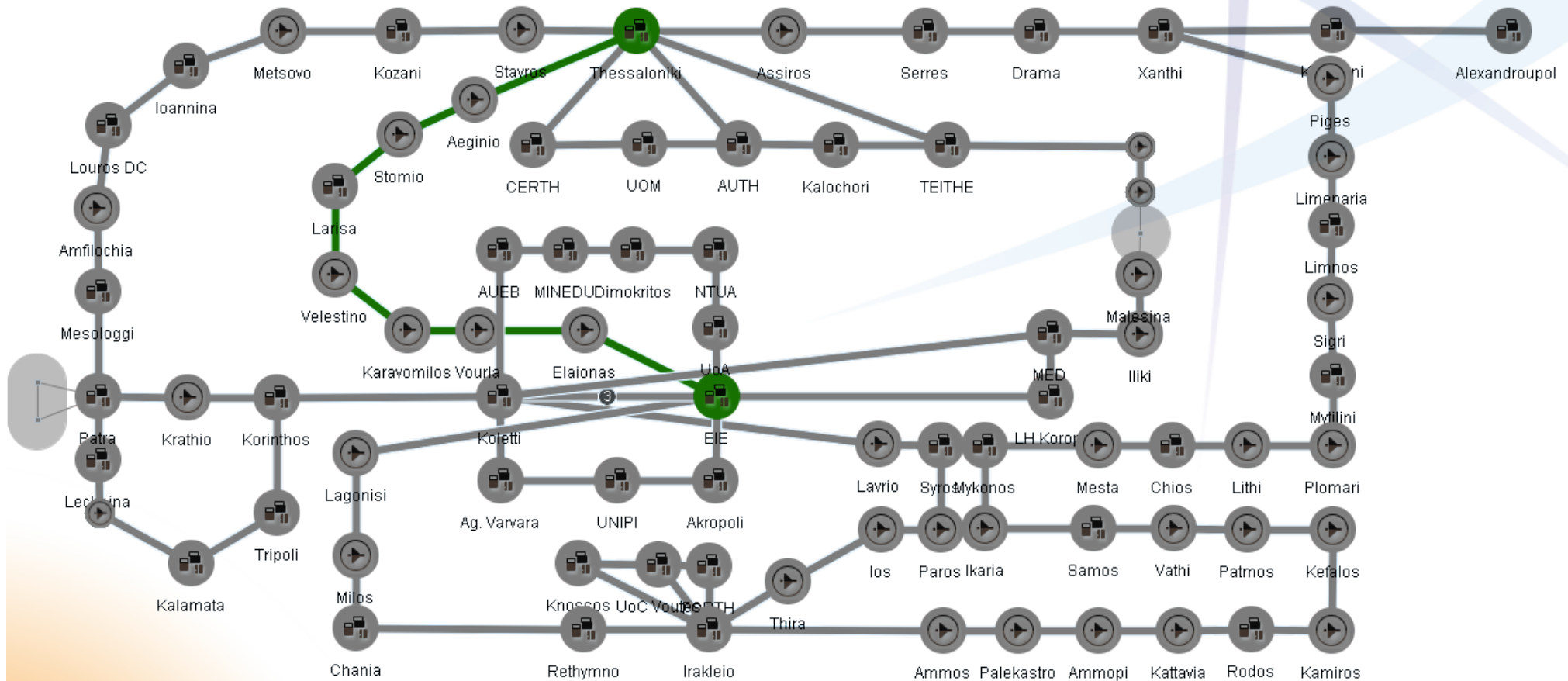
grnet Networking Research and Education

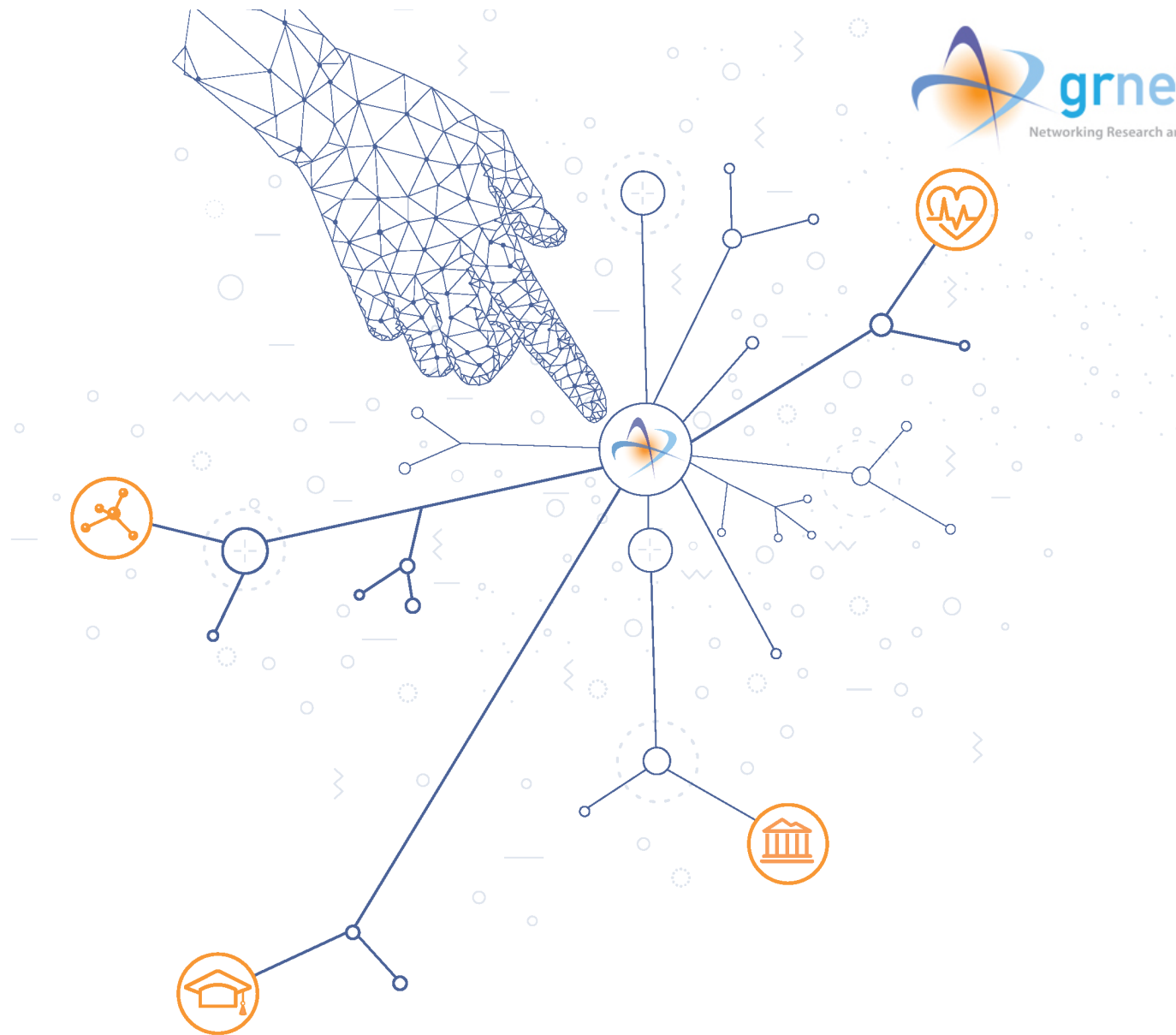
Orders Products NOC sevasti@admin.grnet.gr

	Product description	Current Status	Latest change	Beneficiaries	Full details
>	Lightpath product	CREATED	Jun 13, 2019 3:29 PM	⊙ ⊙ ⊙ ⊙	↻
>	Lightpath product	TERMINATED	Jun 13, 2019 10:55 AM	⊙ ⊙ ⊙ ⊙	↻
>	Lightpath product	CREATED	Jun 12, 2019 7:53 PM	⊙ ⊙	↻
>	Lightpath product	CREATED	Jun 11, 2019 2:50 PM	⊙ ⊙	↻
>	Lightpath product	TERMINATED	Jun 11, 2019 12:59 PM	⊙ ⊙	↻
>	Lightpath product	TERMINATED	Jun 11, 2019 1:00 PM	⊙ ⊙	↻
>	Lightpath product	TERMINATED	Jun 6, 2019 6:35 PM	⊙ ⊙	↻
>	Lightpath product	TERMINATED	Jun 6, 2019 6:36 PM	⊙ ⊙	↻
⋮	<input type="checkbox"/> Lightpath product	ACTIVE	Jun 6, 2019 6:35 PM	⊙ ⊙	↻
Product Characteristics					
	Label	irakleio1		Label	patra1
	EMS	ECI/LightSoft_1		EMS	ECI/LightSoft_1
	ManagedElement	ECI/EMS_STMS_15/37		ManagedElement	ECI/EMS_STMS_15/25
>	Lightpath product	TERMINATED	Jun 3, 2019 5:54 PM	⊙ ⊙	↻

1 - 10 of 19 products | < > 1 / 2 >

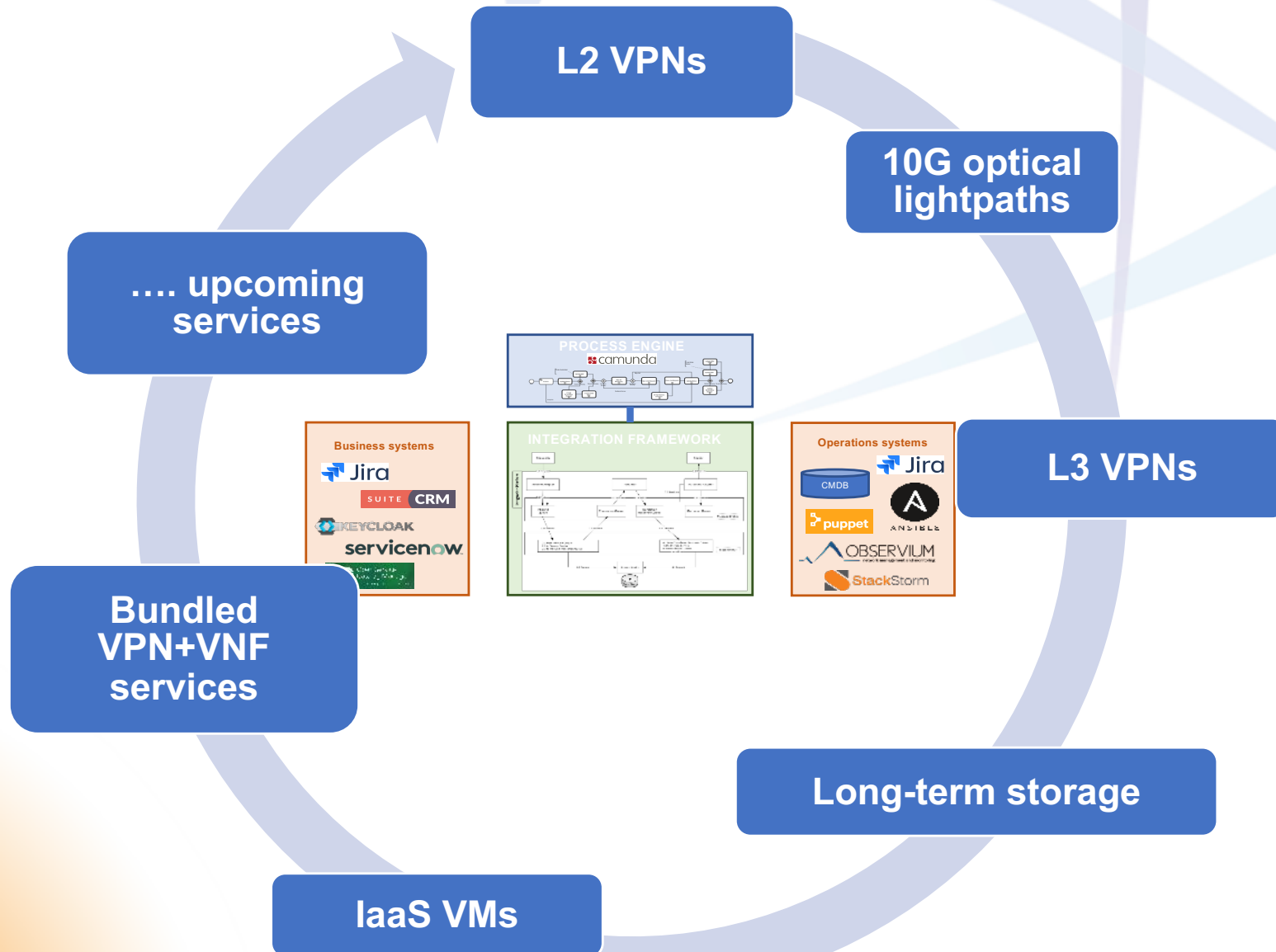
Here comes the lightpath!





Looking into the future

What comes next



Greek Research and Technology Network

Thank you!
sevasti@grnet.gr



**STAY CONNECTED
FOLLOW US**

www.grnet.gr
info@grnet.gr

-  [grnet.gr](https://www.facebook.com/grnet.gr)
-  [grnet_gr](https://twitter.com/grnet_gr)
-  [grnet sa](https://www.linkedin.com/company/grnet-sa)
-  [grnet edet](https://www.youtube.com/grnet-edet)
-  [grnet.gr](https://www.instagram.com/grnet.gr)

