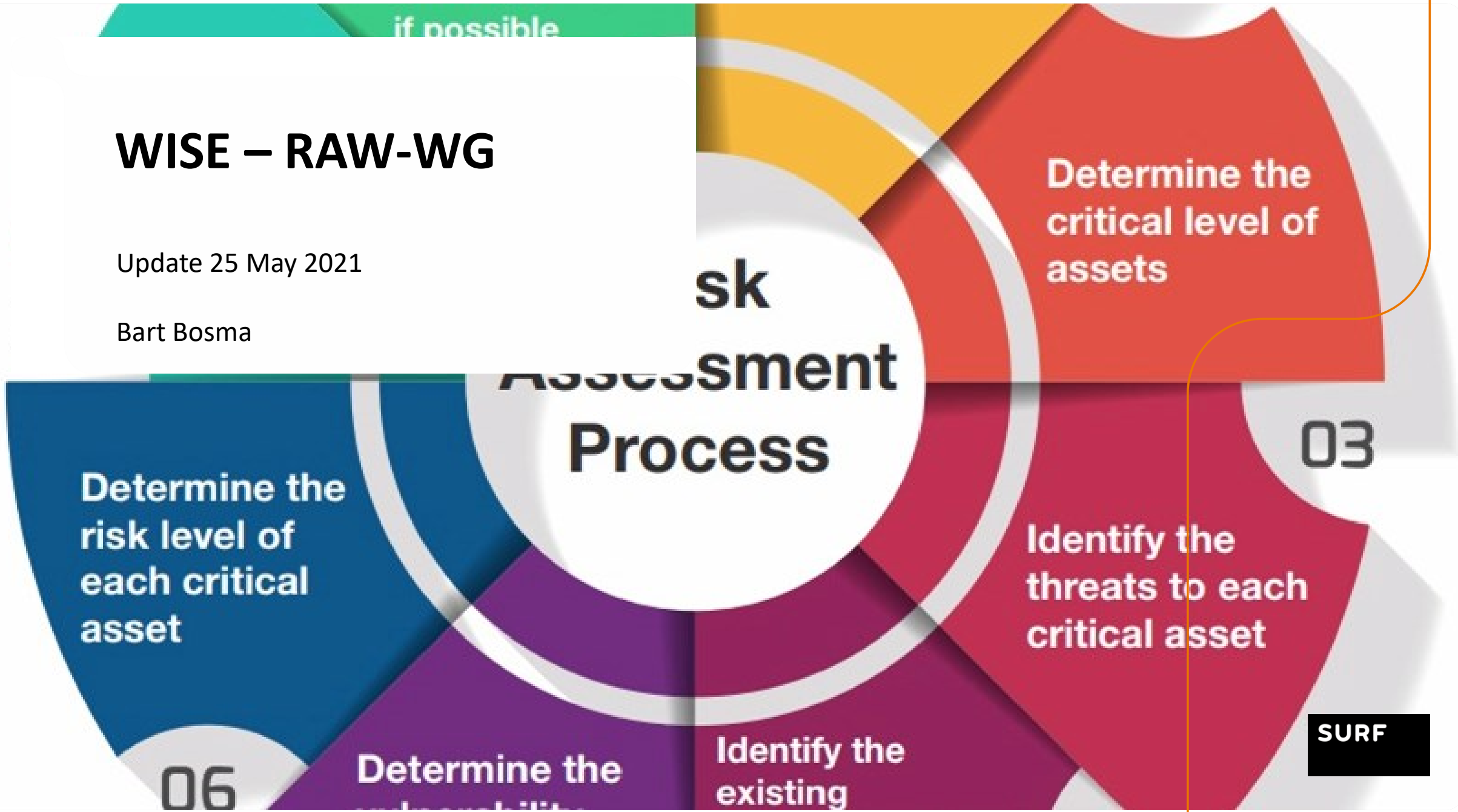


if possible

WISE – RAW-WG

Update 25 May 2021

Bart Bosma



Risk Assessment Process

01 Determine the critical level of assets

03

02 Identify the threats to each critical asset

SURF

05 Determine the risk level of each critical asset

06

04 Determine the

03 Identify the existing

The WISE RISK template

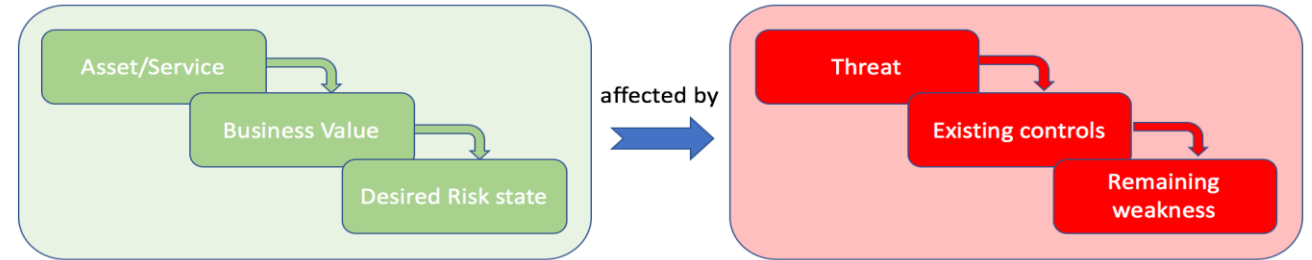
- Created several years ago
 - no further development
 - technical approach
 - nice setup, but viewed as overwhelming, complex and inefficient (in spite of associated guideline)
 - Lacking good examples

Created	2017-04-15/U.K.								
Modified	2017-05-04/U.K.								
Approved	2017-05-30/UK.								
Revision	1.0	WISE Risk Management Template							
Asset or service	Business value	Risk targets	Threat	Existing controls	Still existing vulnerabilities/ weaknesses	Description of Impact	Impact	Likelihood	Risk
Examples:							1-5	1-3	1-15
Network connectivity	Medium	>9,99% SLA	DOS/DDOS	rate limiting	Bad design, poor monitoring	Bad PR, unhappy customers	3	2	6
			Faults/ firmware	Good support agreement			4	2	8
Users datasets on the HPC cluster	High		Unauthorized access by other user	Login / password IP address control	Password not protected by the user	Data centre reputation, lack of confidence	3	1	3
			Accidental Data removal	Current Backup solution	Backup/restore not tested	Data Availability and integrity	4	2	8
Storage for sensitive data		No leaks							
				Policies.					

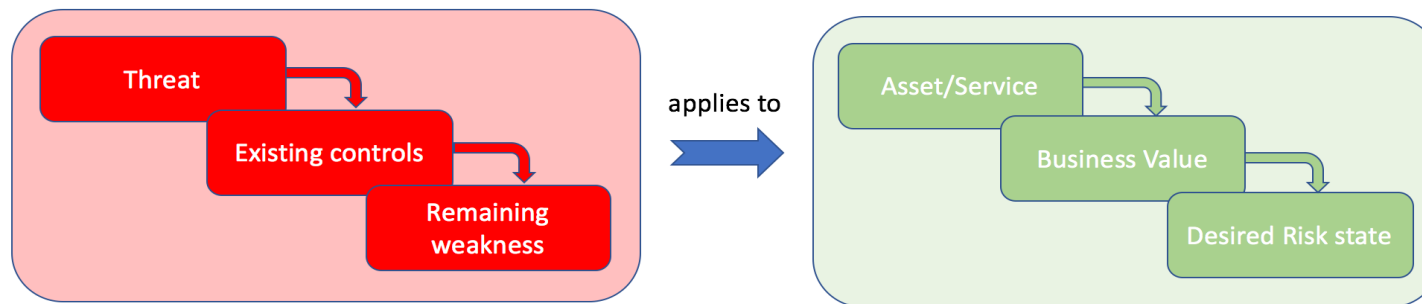
The WISE RISK template

- Two possible approaches in the template:

Asset-centric approach

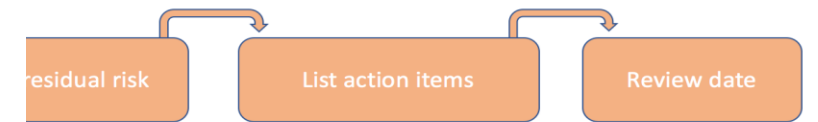


Threat-centric approach



results in

$$\text{Impact (1-4)} \times \text{Likelihood (1-4)} = \text{Risk score (1-16)}$$



results in

$$\text{Impact description} \leftrightarrow \text{Impact (1-4)} \times \text{Likelihood (1-4)} = \text{Risk score (1-16)}$$



Now what?

- Take a service-oriented or process-based approach
 - Systems take part in services NREN's offer or in process they have (need to know which systems → CMDB)
 - Introduce a workflow (e.g. 5 steps to follow)
 - Provide examples of common services and/or process in NREN's
 - Use a risk/threat register
 - Add action items to treat the risks that are identified
 - Adopt/adapt a known method?
 - Connection with GÉANT Security Baseline ?

Driving innovation together

