

# SWITCH edu-ID and student mobility



# SWITCH

Christoph Graf  
christoph.graf@switch.ch  
TF-EDU, 17.6.2021

# What's next for educational services?...

... will be hosted by **Nathalie Roth** (SWITCH) and **Tomi Dolenc** (ARNES), where **Christoph Graf** from the Swiss National Research and Education Network (SWITCH), will provide an insight in ~~student~~ ~~mobility~~ and edu-ID.

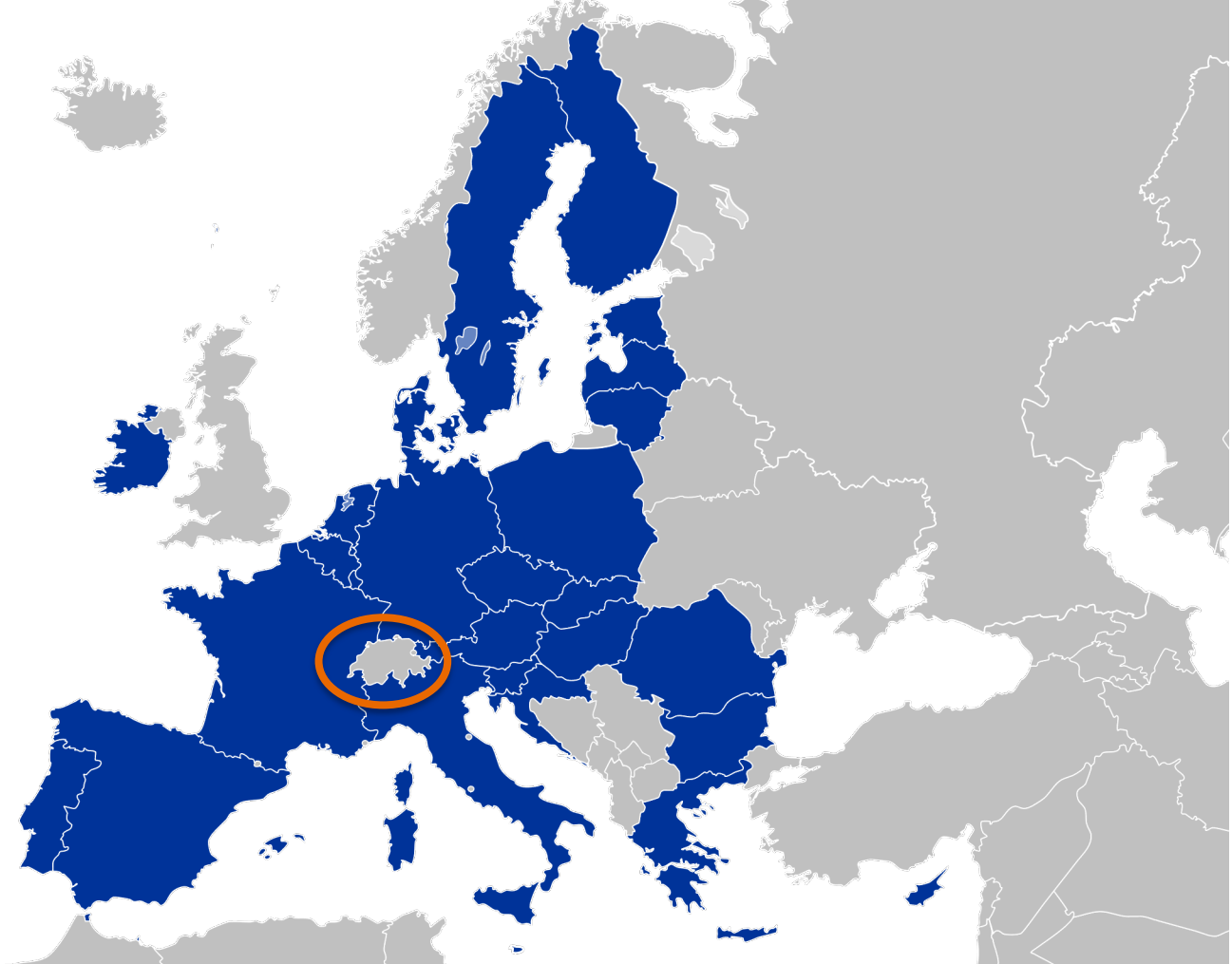


life-long learner

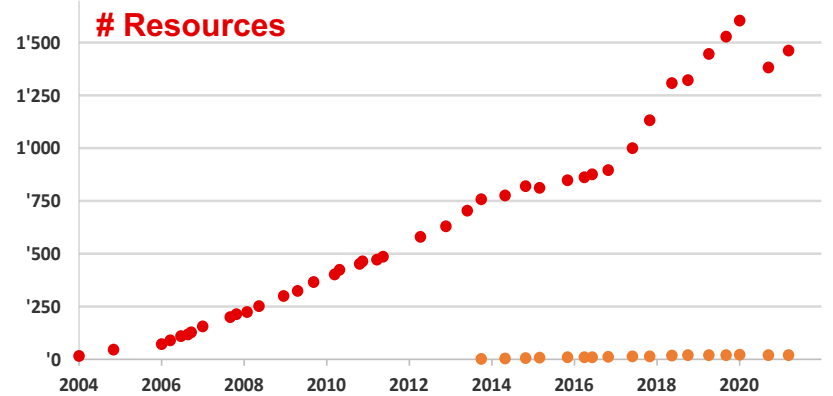
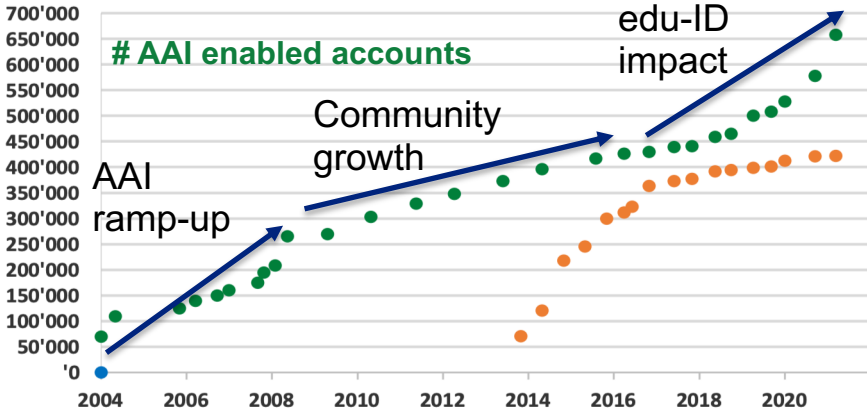
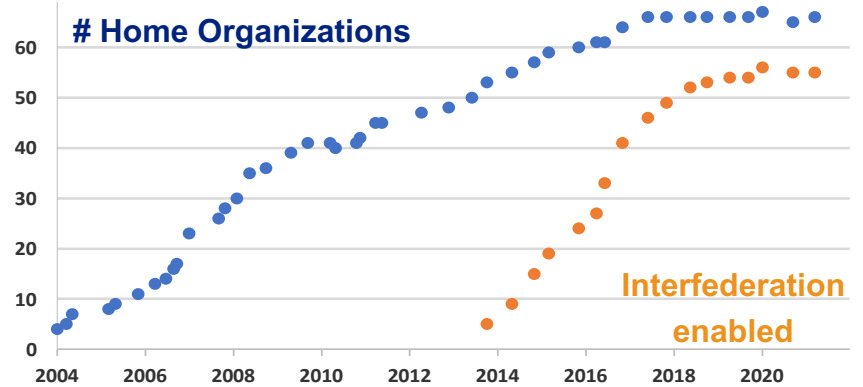
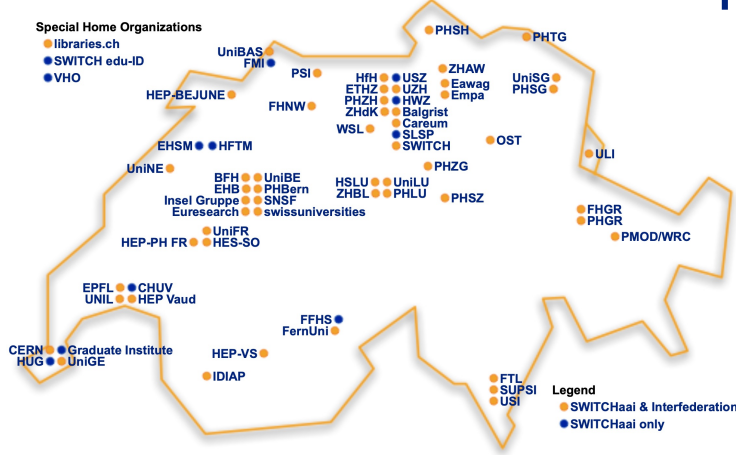


journey

But let's start with some facts and figures...

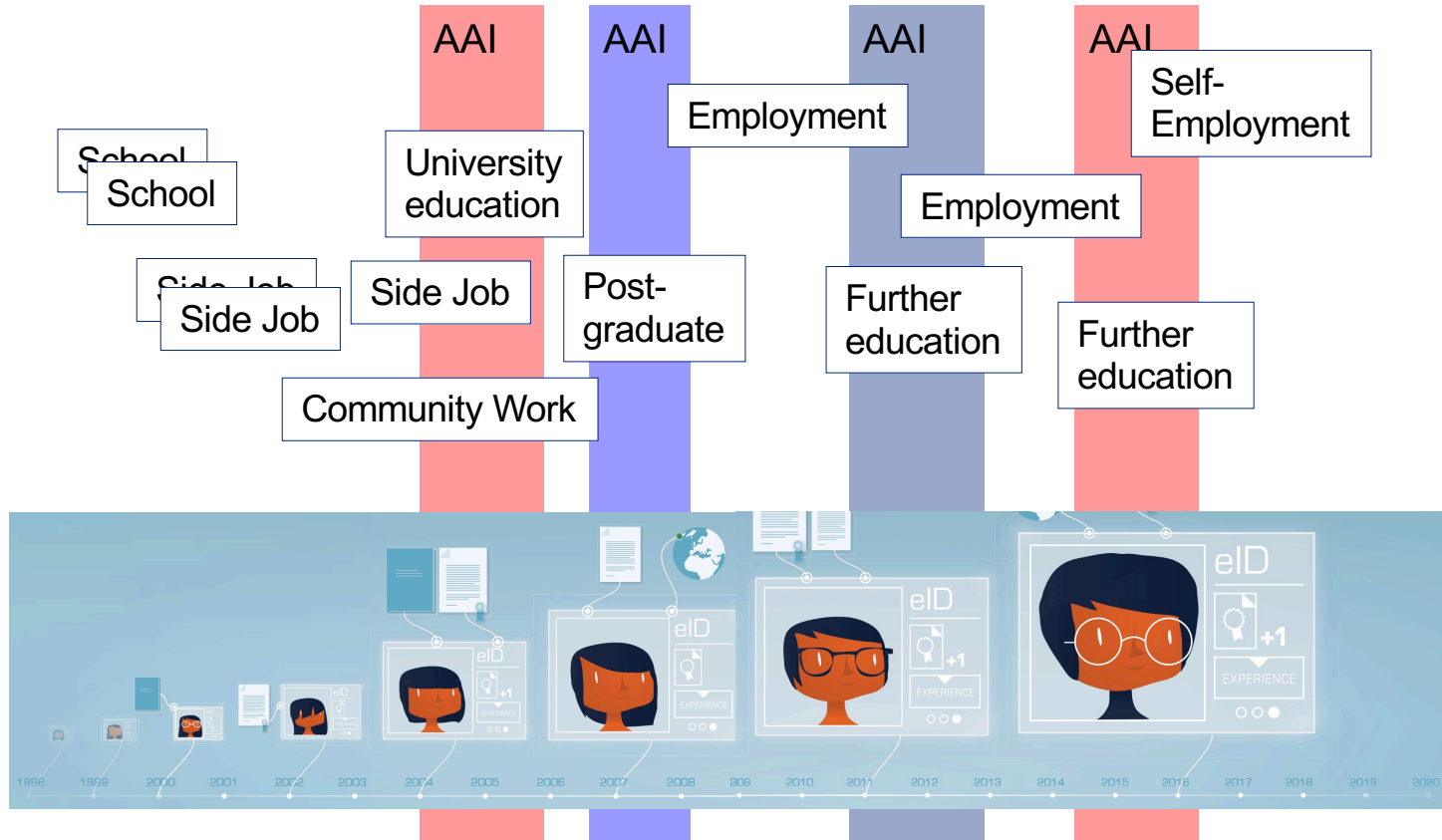


# SWITCH.Hai Federation Spring 2021

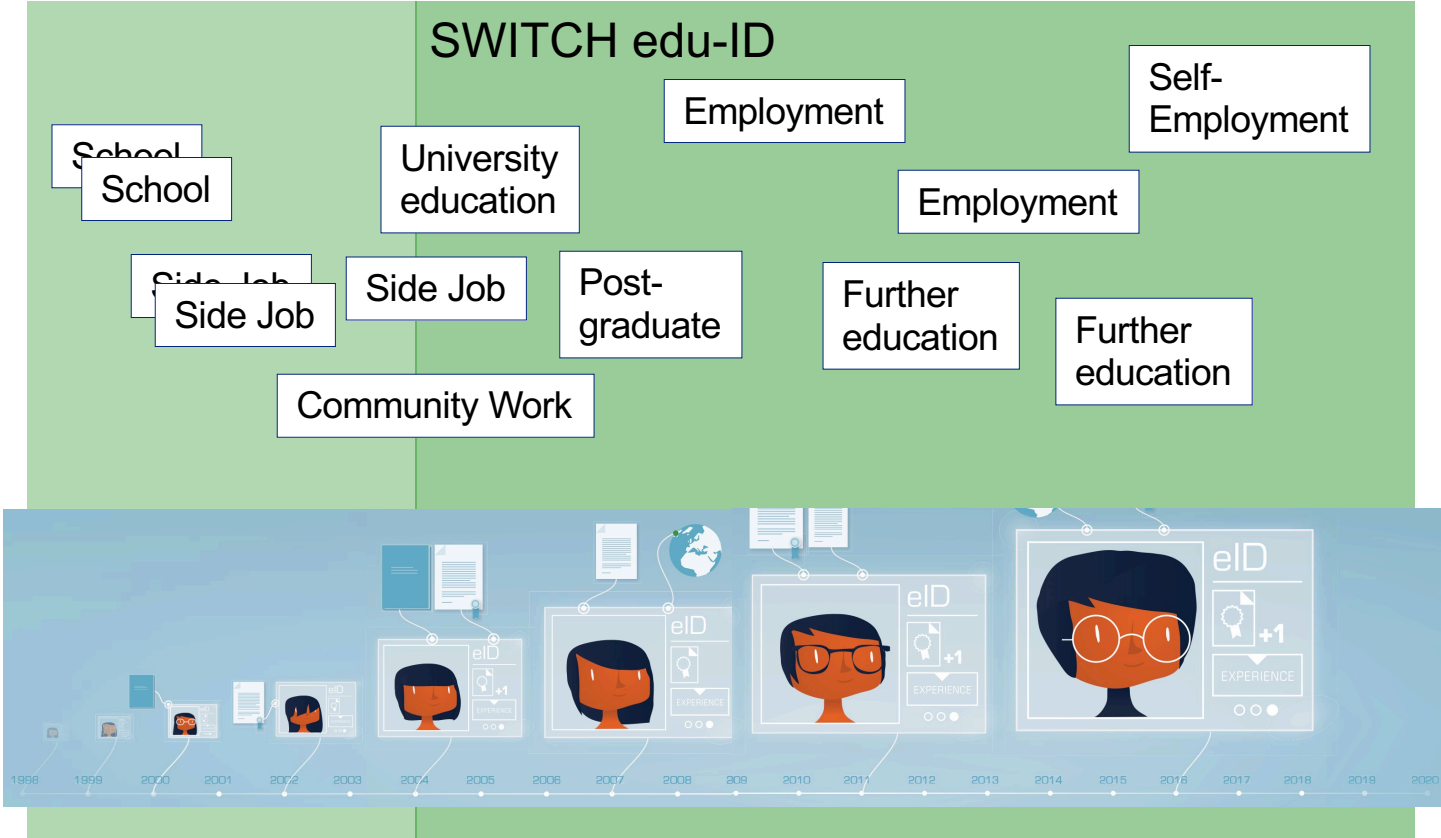




# The life-long learner's journey



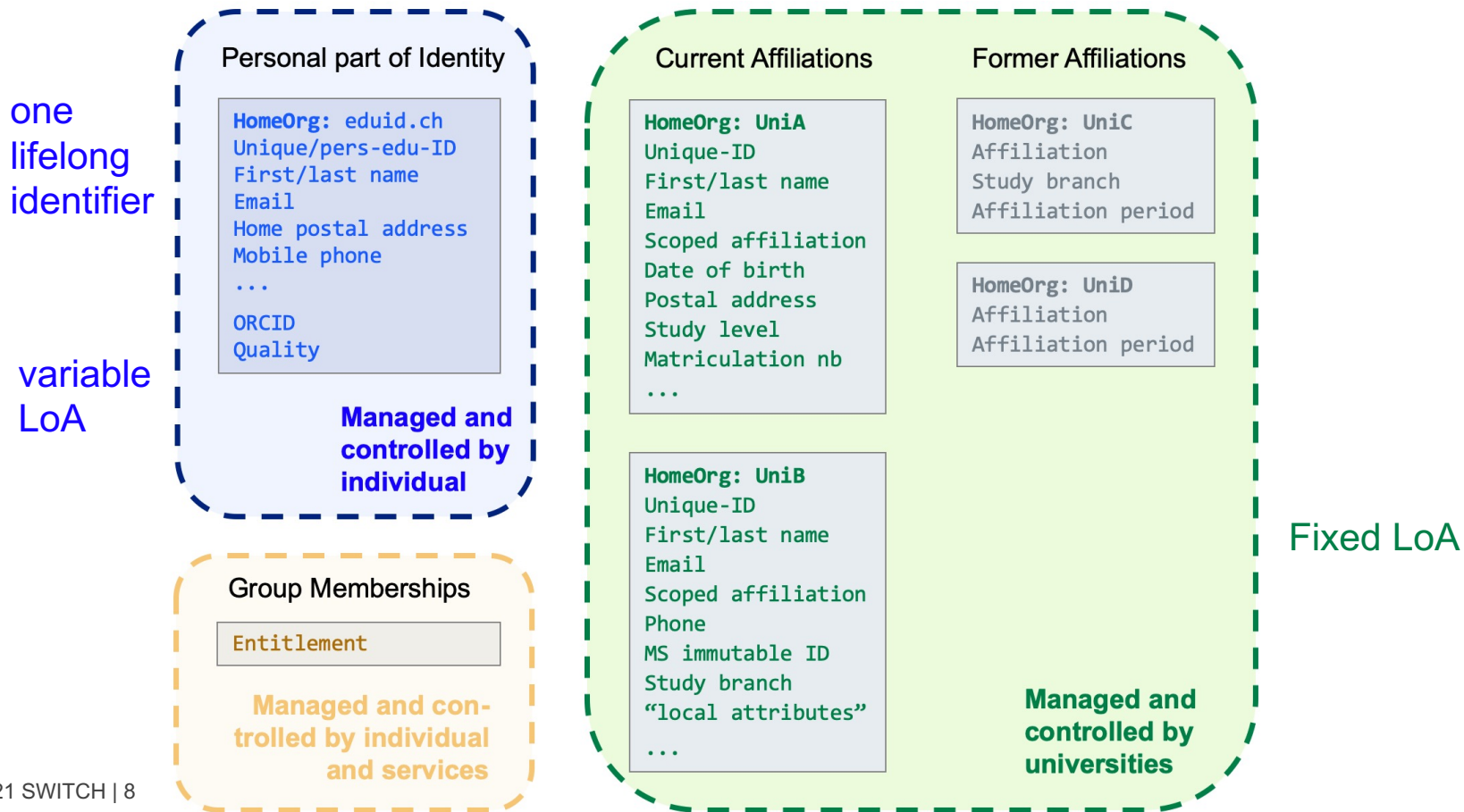
# The life-long learner's journey



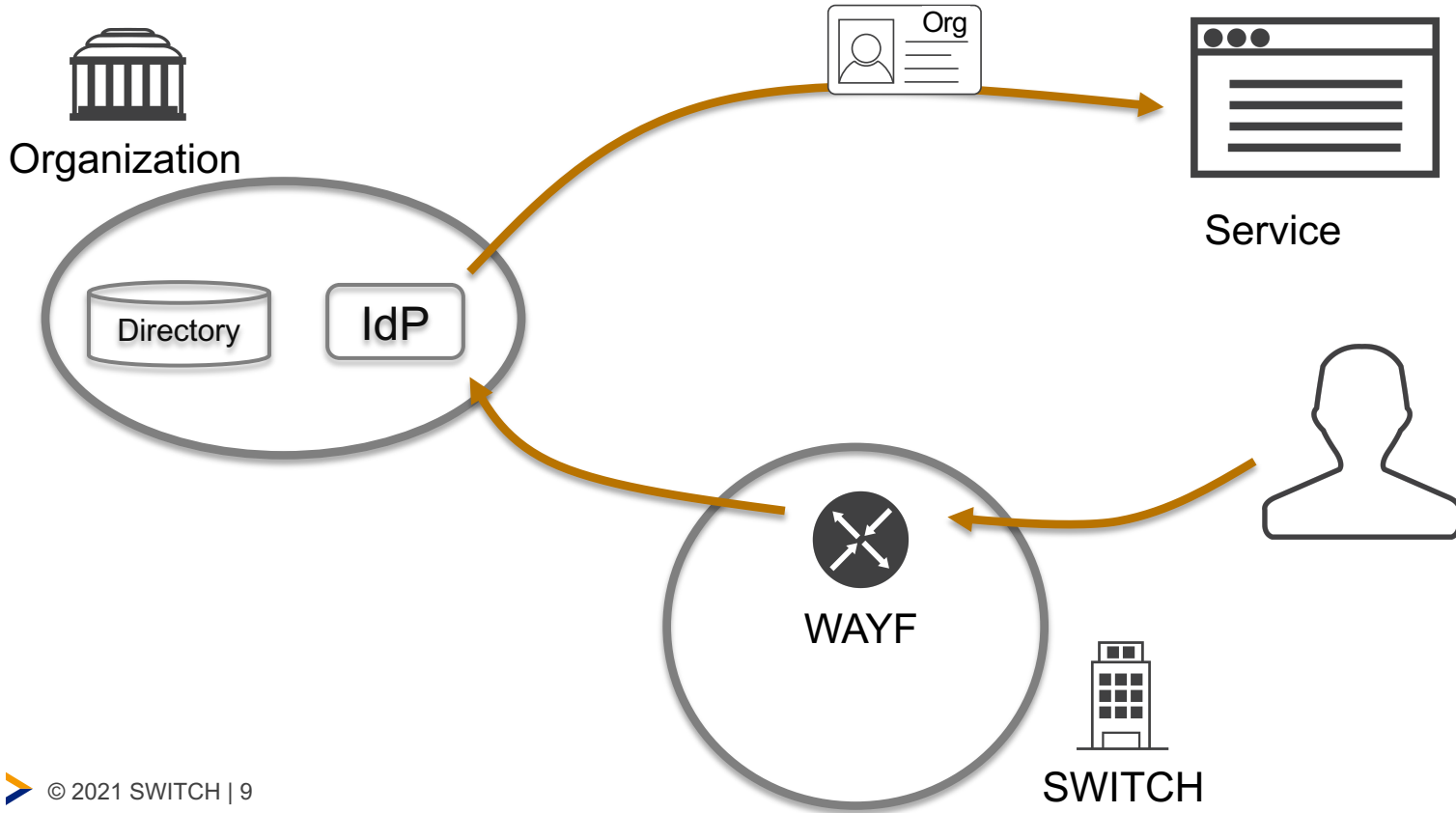
# The AAI data model

```
HomeOrg: UniA  
Unique-ID  
First/last name  
Email  
Scoped affiliation  
Date of birth  
Postal address  
Study level  
Matriculation nb  
...
```

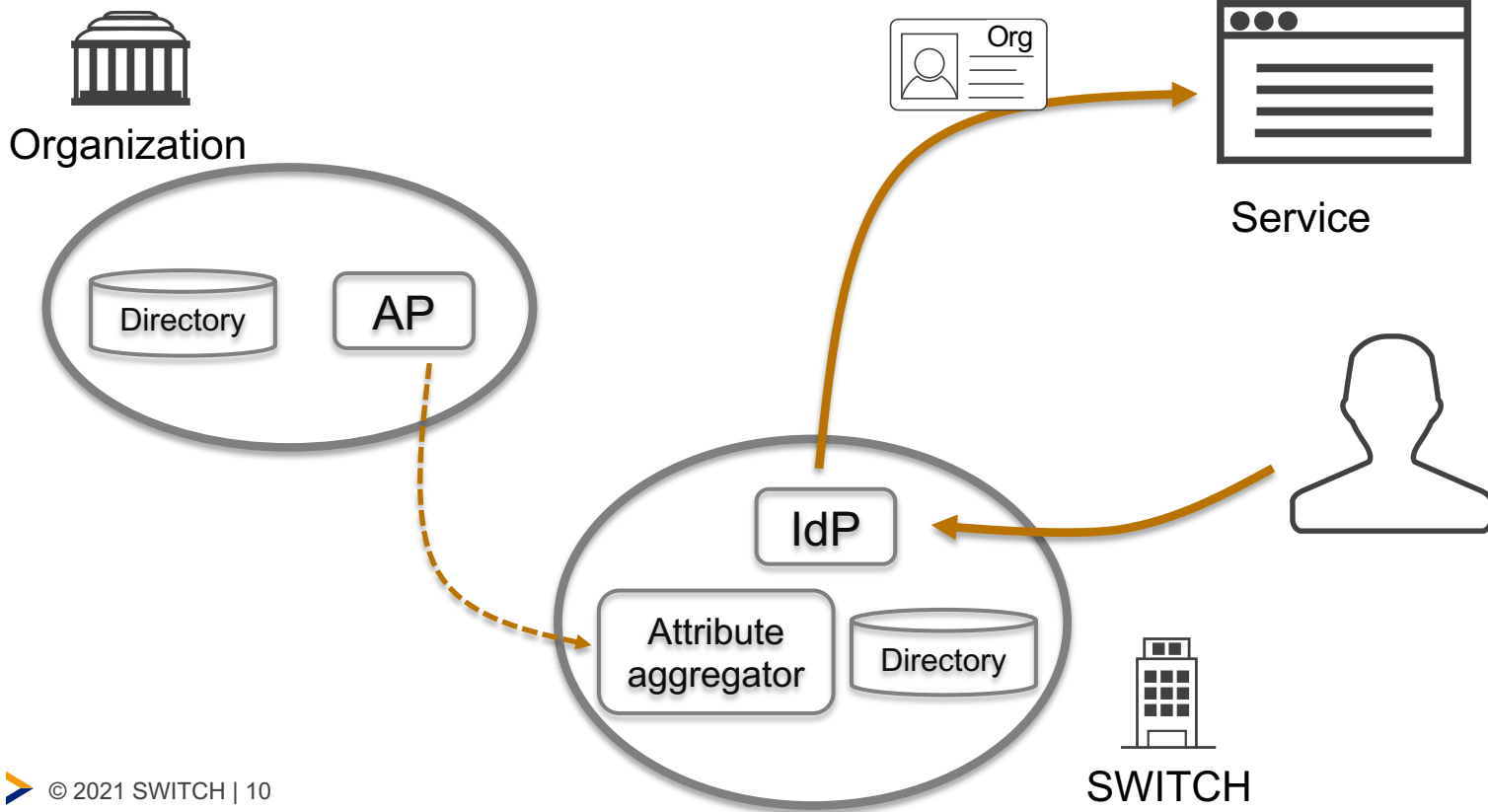
# The edu-ID data model



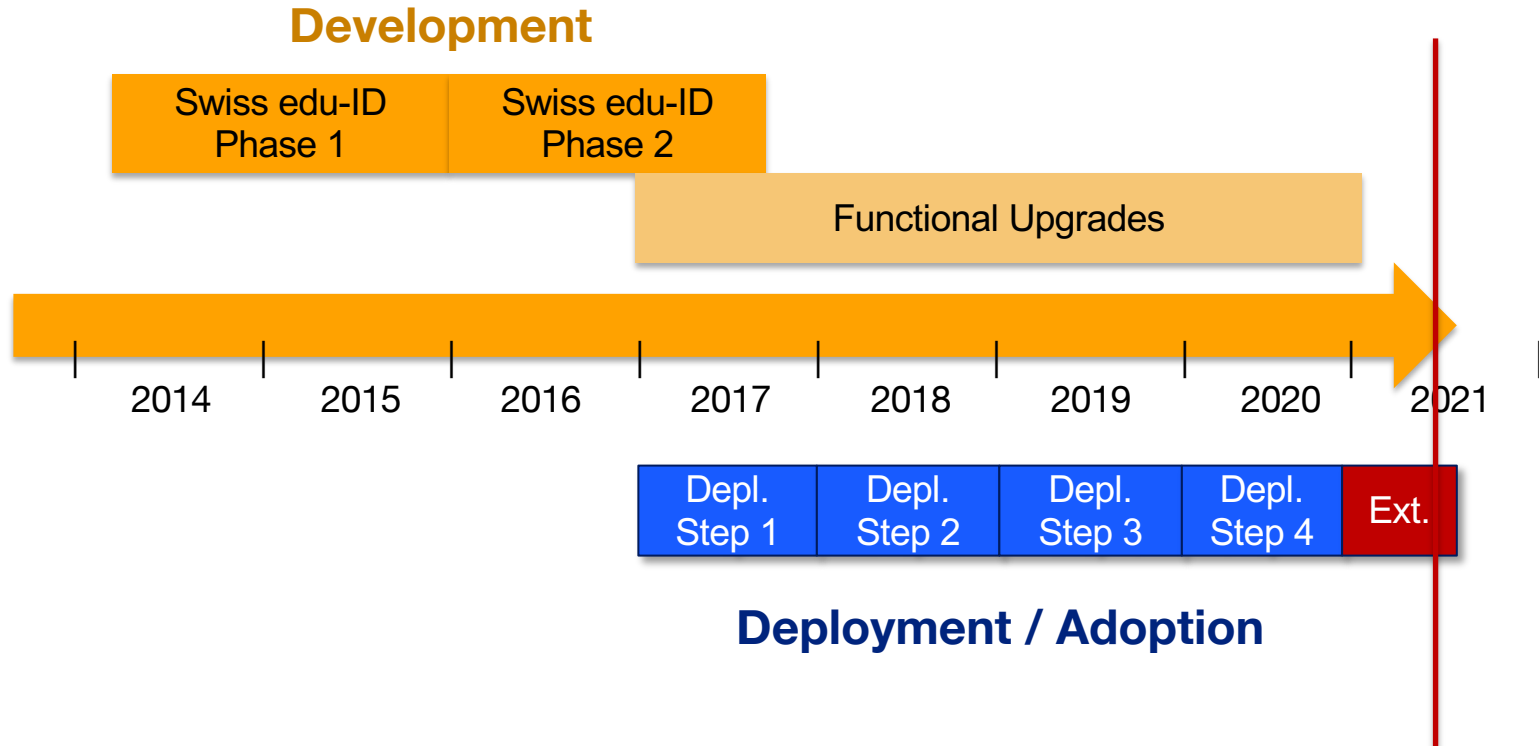
# Organisation with their own AAI-IdP



# Organisation with edu-ID Integration

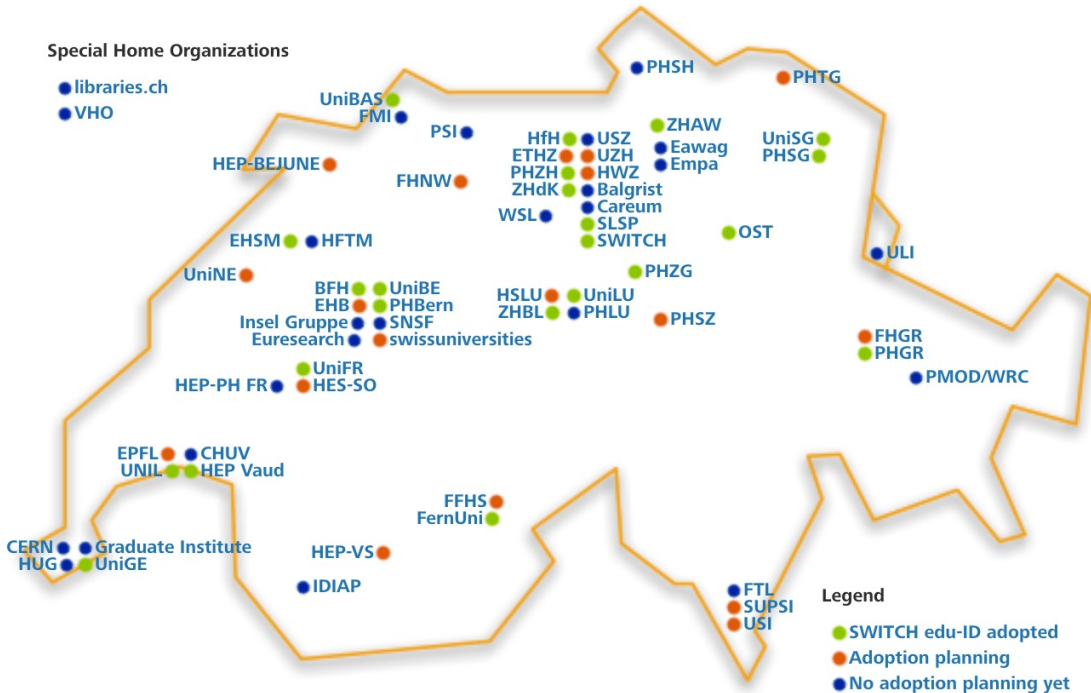


# Swiss edu-ID project roadmap 2014-2020+



# Developed with and for Swiss universities

SWITCH edu-ID is the established standard at Swiss universities.

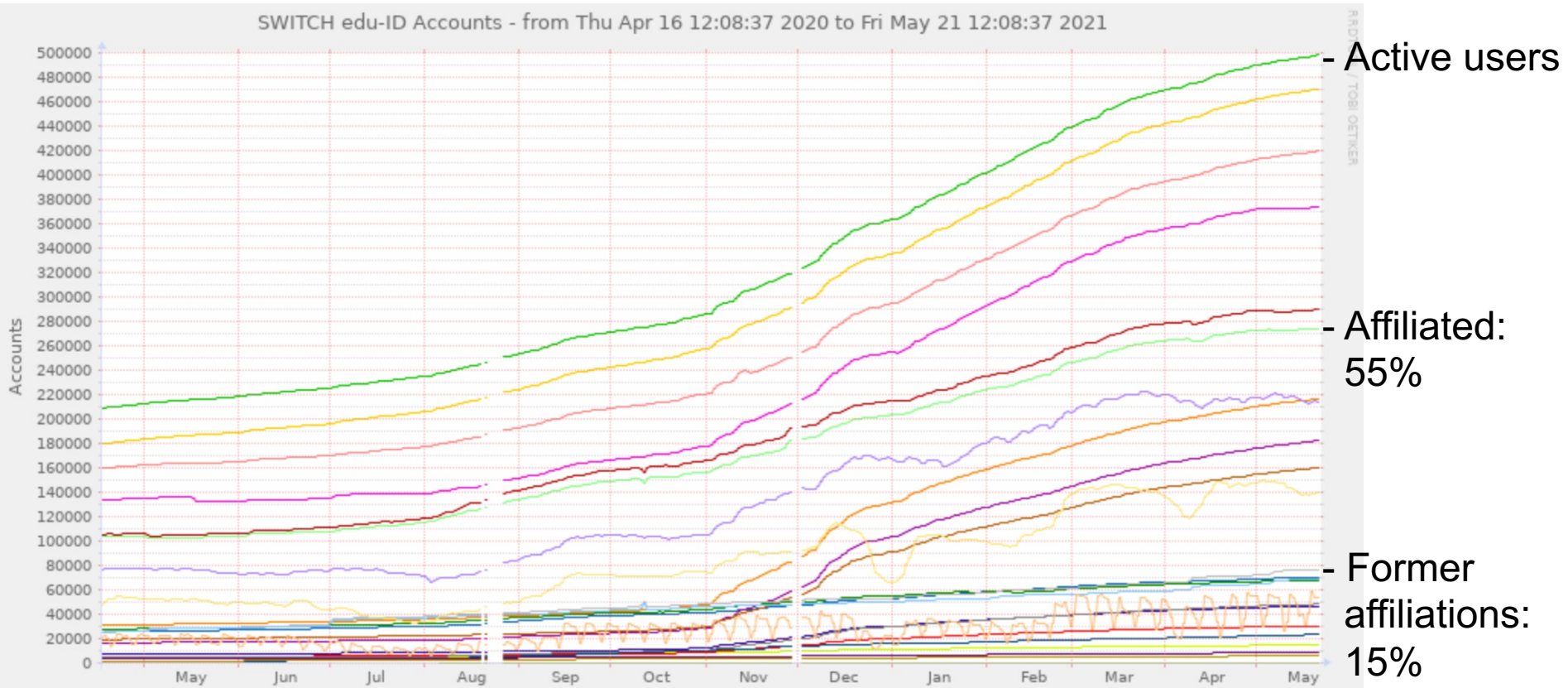


More

<https://www.switch.ch/edu-id/universities/>



# The SWITCH edu-ID population



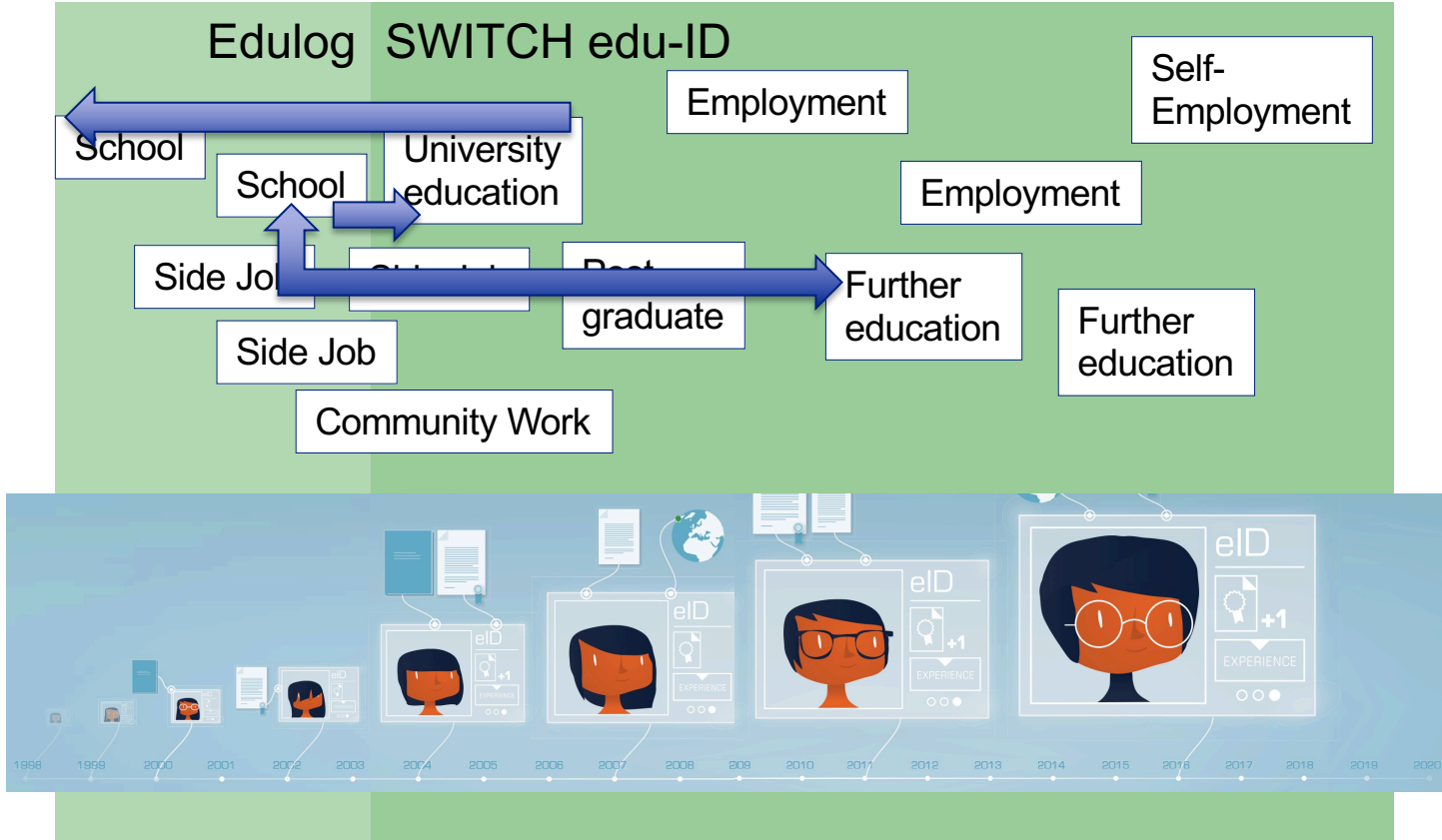


# À propos d'EduLog

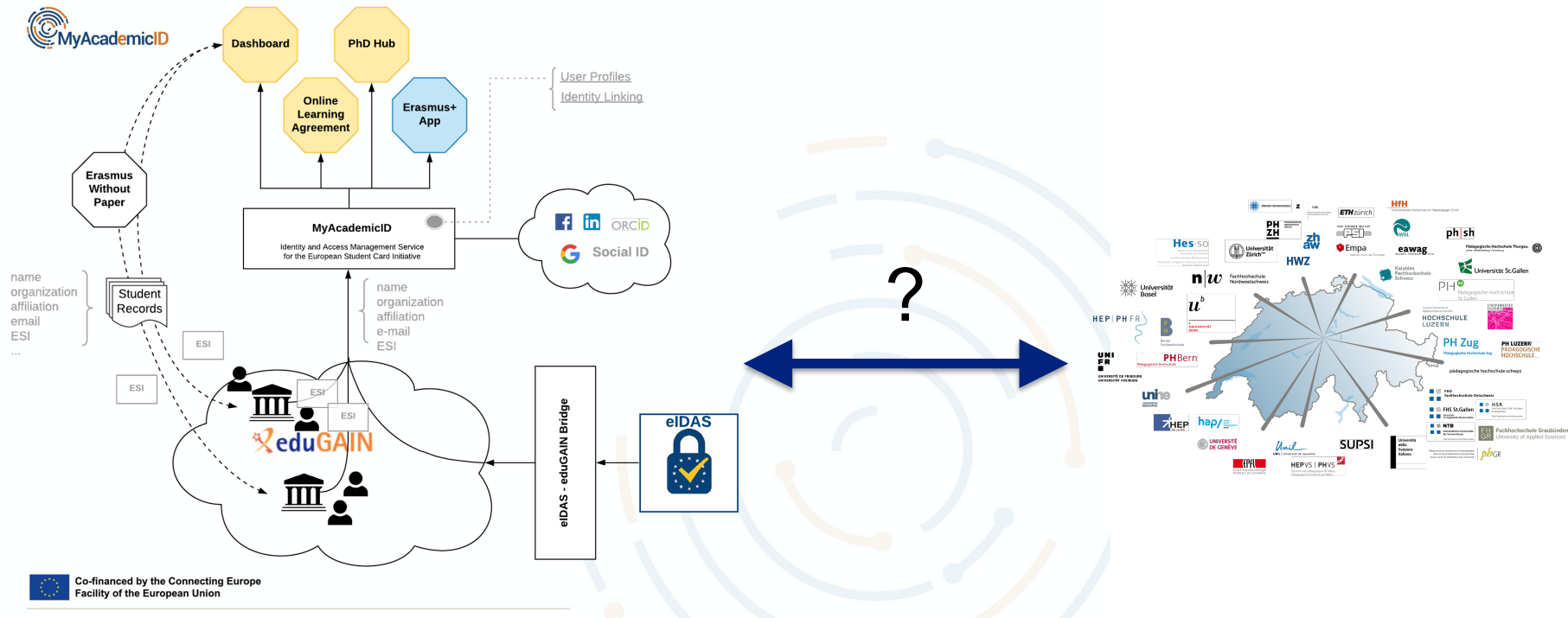
Sélectionner une catégo... ▼



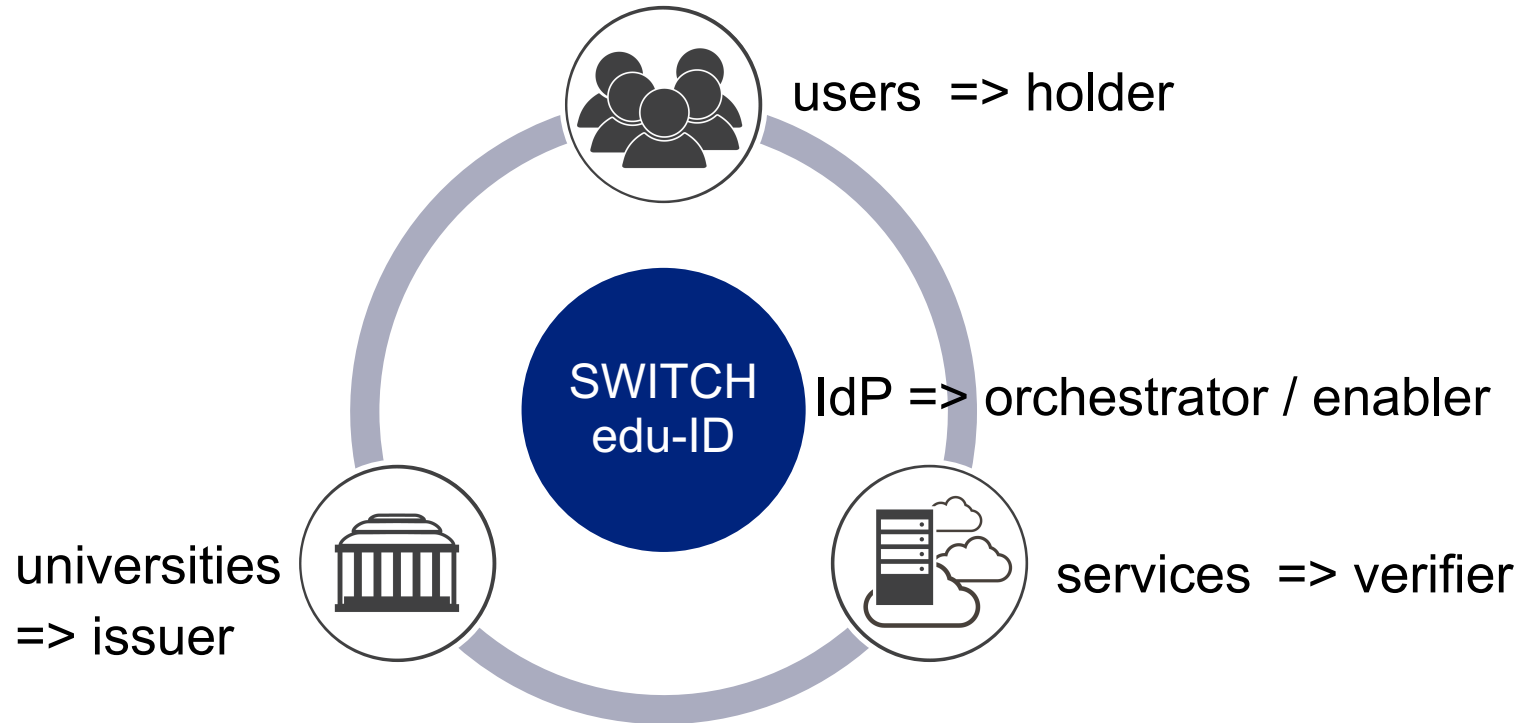
07. 10. 2020  
EduLog en bref



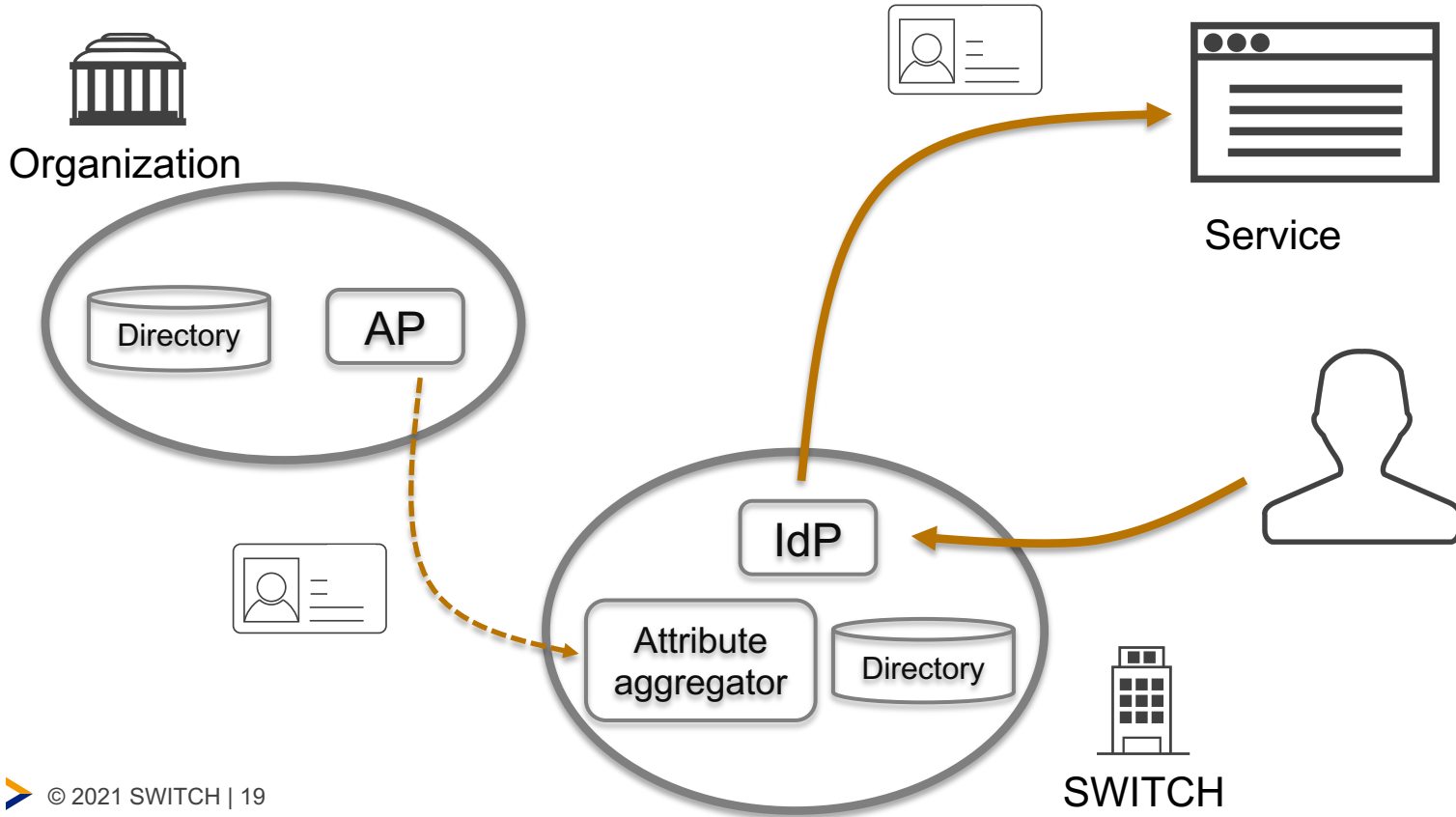
# The journey across national borders



# Outlook: Continuing the journey – from user-centric to self-sovereign identities?

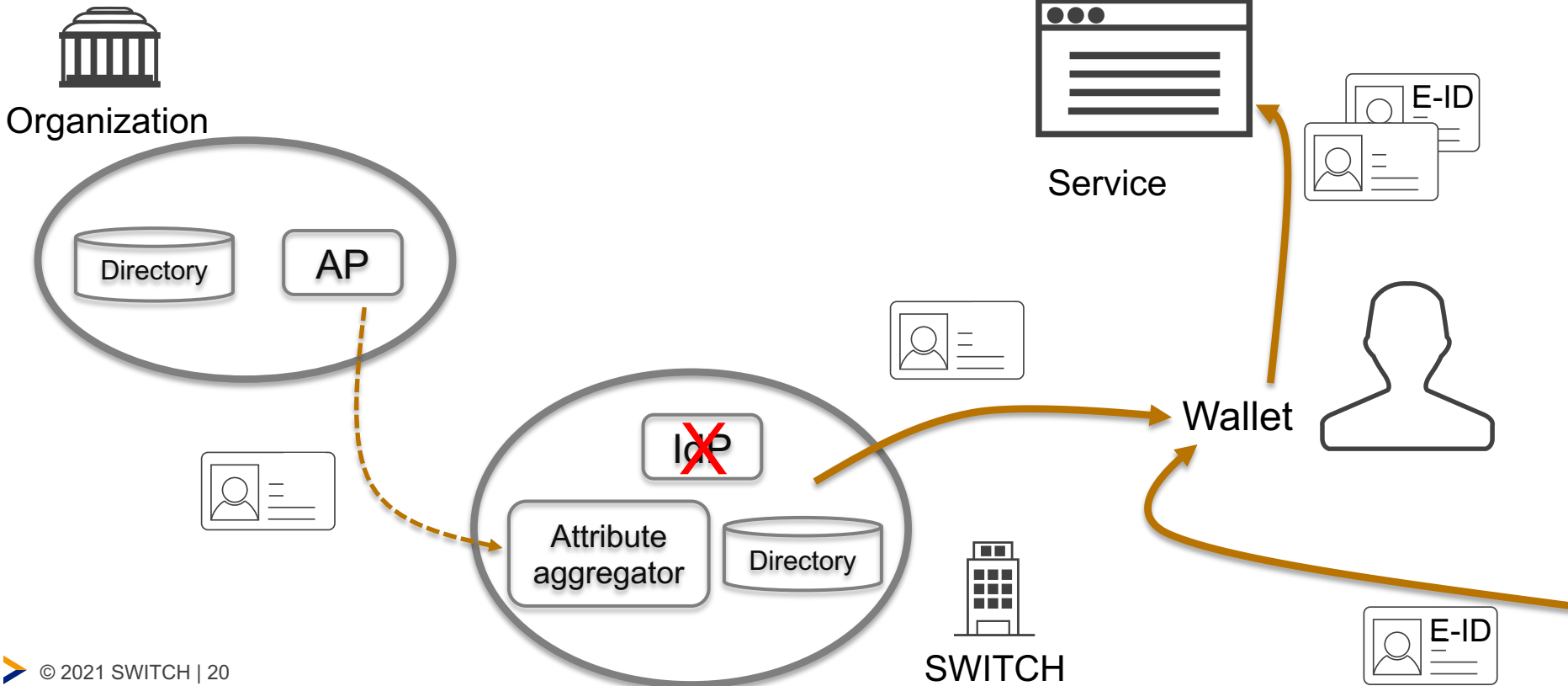


# Outlook: From a user-centric edu-ID...



# Outlook: ... to a self-sovereign edu-ID

First thoughts on this journey: <https://www.switch.ch/stories/Bring-your-own-identity/>





# SWITCH

Working for a better digital world

