

TcpAnalyzer

Windows TCP Analyzer

The Microsoft Windows SDK also contains a tool that can read the so called ESTATS of an open TCP connection.

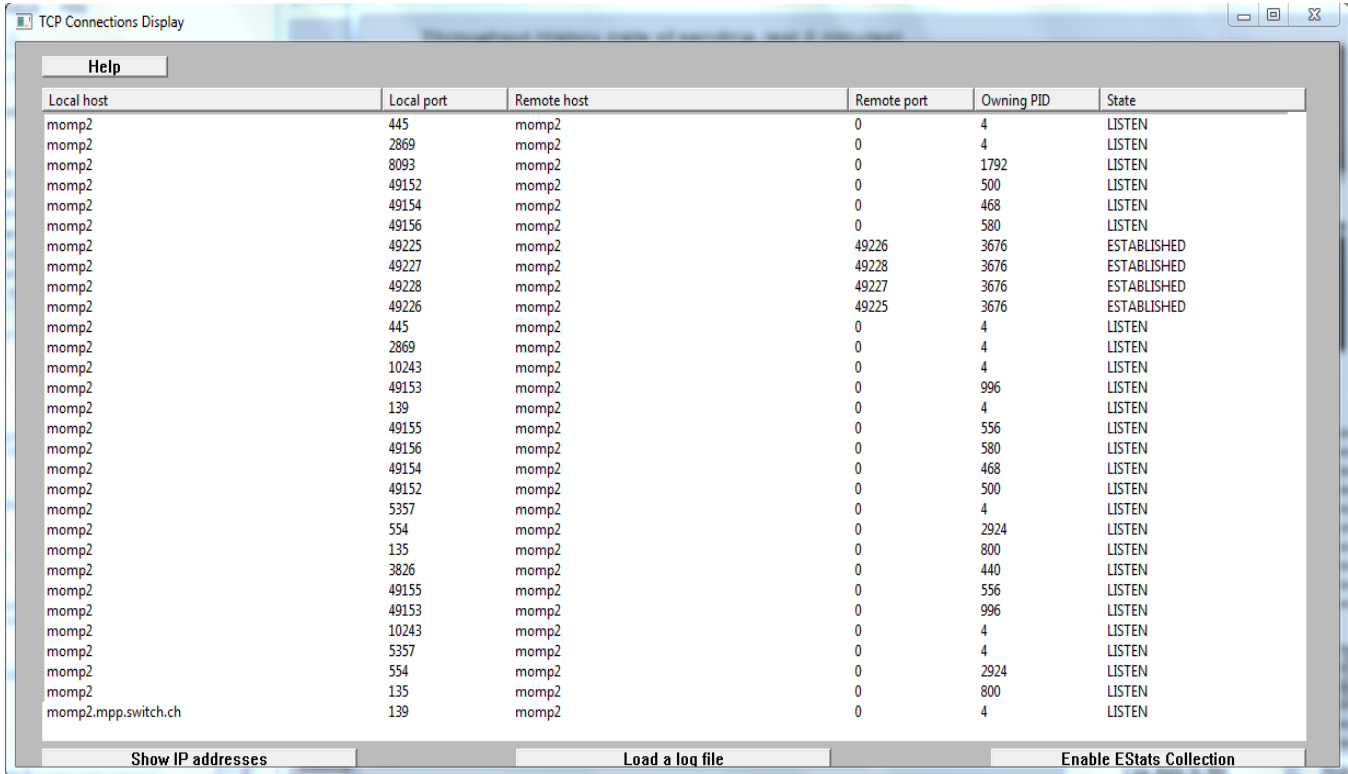
When running, you get a listing of all current TCP connections. Then you can click on one and see statistics about it in a new window. You can get a throughput history, find out where most time is spent during the connection. This is good to find out performance bottlenecks of an already running application, without interrupting it.

Unfortunately to install this tool you need to download and install the whole SDK (the ISO image is a whopping 1.3GB), as there is no separate installation available.

More information is available [here](#).

Screenshots:

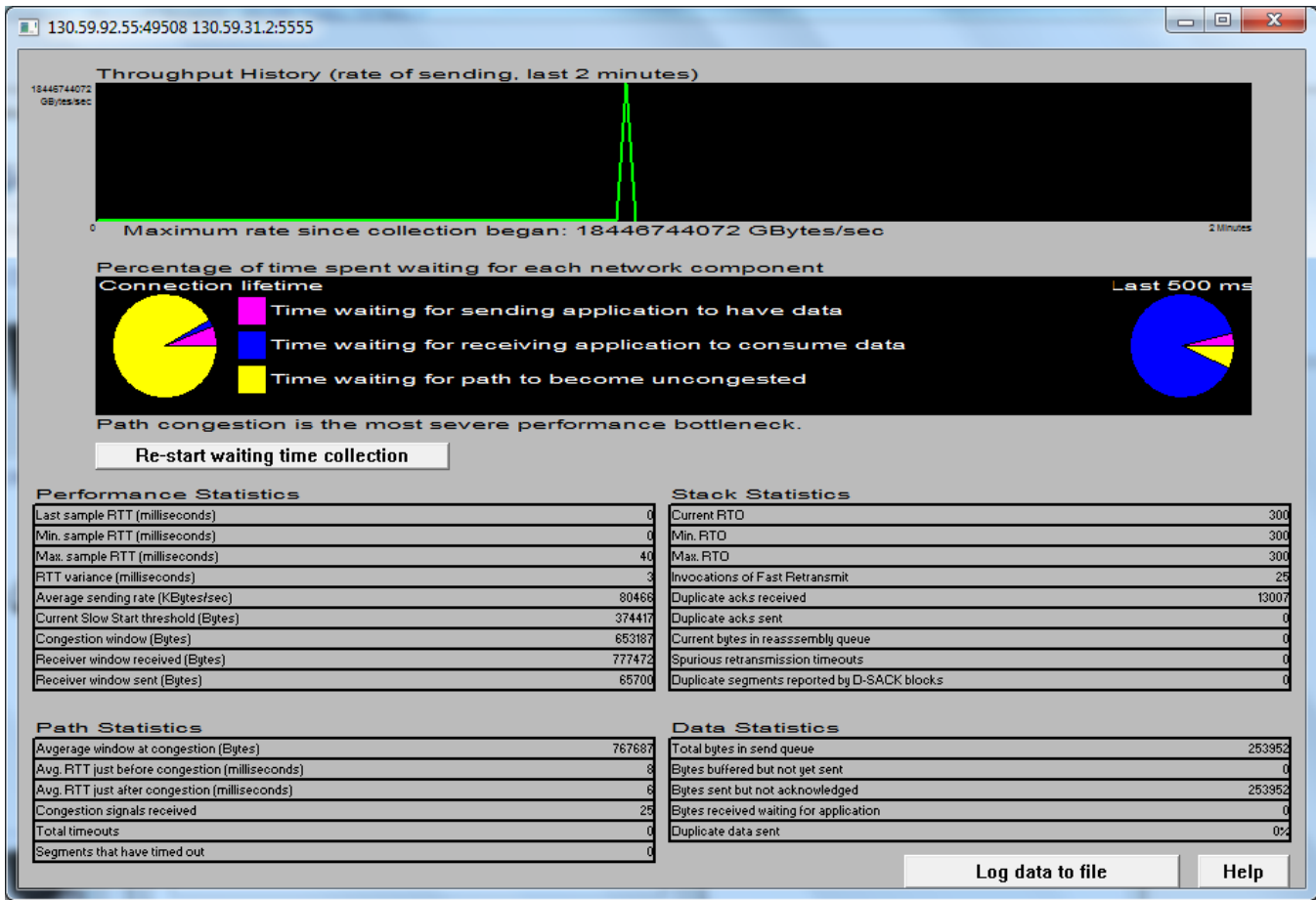
- TCP Analyzer Connection selection:



The screenshot shows a window titled "TCP Connections Display" with a "Help" button in the top left. The main area contains a table with the following columns: Local host, Local port, Remote host, Remote port, Owning PID, and State. The table lists various connections, mostly from "momp2" to "momp2", with some from "momp2.mpp.switch.ch". The states are either "LISTEN" or "ESTABLISHED". At the bottom of the window, there are three buttons: "Show IP addresses", "Load a log file", and "Enable EStats Collection".

Local host	Local port	Remote host	Remote port	Owning PID	State
momp2	445	momp2	0	4	LISTEN
momp2	2869	momp2	0	4	LISTEN
momp2	8093	momp2	0	1792	LISTEN
momp2	49152	momp2	0	500	LISTEN
momp2	49154	momp2	0	468	LISTEN
momp2	49156	momp2	0	580	LISTEN
momp2	49225	momp2	49226	3676	ESTABLISHED
momp2	49227	momp2	49228	3676	ESTABLISHED
momp2	49228	momp2	49227	3676	ESTABLISHED
momp2	49226	momp2	49225	3676	ESTABLISHED
momp2	445	momp2	0	4	LISTEN
momp2	2869	momp2	0	4	LISTEN
momp2	10243	momp2	0	4	LISTEN
momp2	49153	momp2	0	996	LISTEN
momp2	139	momp2	0	4	LISTEN
momp2	49155	momp2	0	556	LISTEN
momp2	49156	momp2	0	580	LISTEN
momp2	49154	momp2	0	468	LISTEN
momp2	49152	momp2	0	500	LISTEN
momp2	5357	momp2	0	4	LISTEN
momp2	554	momp2	0	2924	LISTEN
momp2	135	momp2	0	800	LISTEN
momp2	3826	momp2	0	440	LISTEN
momp2	49155	momp2	0	556	LISTEN
momp2	49153	momp2	0	996	LISTEN
momp2	10243	momp2	0	4	LISTEN
momp2	5357	momp2	0	4	LISTEN
momp2	554	momp2	0	2924	LISTEN
momp2	135	momp2	0	800	LISTEN
momp2.mpp.switch.ch	139	momp2	0	4	LISTEN

- TCP Analyzer Example connection with congested path:



- TCP Analyzer Connection with small buffers:

